

TILE SAFE SHOWER SYSTEM





THE SHOWERWELL DIFFERENCE



Over 35 years experience



Two manufacturing sites in Auckland



Project managers applied, when needed, to each installation project



An efficient mix of imported products and materials with local manufacturing to offer flexibility and the best value possible



Large team of dedicated installers in the Auckland area as well as experienced installers in the Waikato, BOP, Wellington and Christchurch



Area Representatives ready to visit your site to provide advice, measure and quotations for your project



A conservative approach to products and solutions to ensure longevity, performance and continued back up service



Training available for builders, plumbers and tilers on product installation methodology and best industry practice for product install

STAND THE TEST OF TIME

At Showerwell, we are dedicated to the ongoing process of product design and development to provide a high-quality tiled shower system. To achieve this, we constantly re-evaluate our products and implement design refinements utilising the most up-to-date technology and materials available.

The Showerwell Tile Safe Shower System - now in its 5th generation - demonstrates the technical and design ingenuity that has made Showerwell a market leader. The range embraces a contemporary style, and allows you to create a look and feel to suit your taste and budget.

Well respected by interior designers, architects, builders, plumbers, and developers, Showerwell provide a comprehensive range of products to suit a variety of bathroom needs.

OUR COMBINATION OF EXCEPTIONAL
CUSTOMER SERVICE, TECHNICAL
KNOWLEDGE, AND QUALITY PRODUCTS
THAT STAND THE TEST OF TIME, PROVIDE
YOU WITH GUARANTEED **‘SHOWERWELL
PEACE OF MIND.’**



TRUSTED QUALITY AND PERFORMANCE

Showerwell's shower systems have been specified by some of New Zealand's largest group housing companies, consistently for the past 35 years. Testimony to the fact that our shower systems are designed to work, year after year.

This carefully selected range of showers is the perfect solution if you prefer a modern style. The designs are reduced to only the necessary elements to achieve a clean, simple, and contemporary appearance.



PEACE OF MIND

With almost 35 years in the bathroom industry, Showerwell's tileable shower system has been continually upgraded to overcome all endemic issues found with other systems.

Tile Safe was designed during the peak of the leaky building error in New Zealand. We wanted to solve the issues involved with leaky tiled showers. We are proud to say for over 15 years, the Tile Safe system has produced leak free showers to our customers.

What's more, Showerwell offer a 5 year warranty - with our experience and track record, you can relax knowing that the company will still be around to honour that warranty, or to offer advice, should help be required in the future. So you can enjoy the peace of mind that comes with knowing that you have purchased a 'complete tile over shower system' that's guaranteed to last.

PROFESSIONAL INSTALLATION

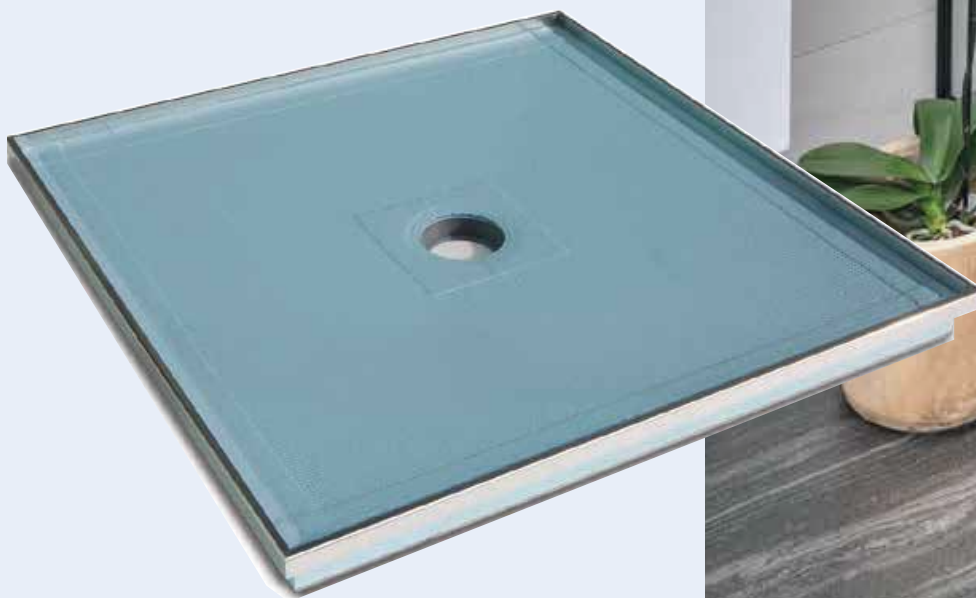
To ensure all aspects of your tiled shower are installed according to the installation instructions provided, we only sell complete systems to qualified and accredited Showerwell Installers.

Showerwell's factory warranty will then cover the installation as well as the Tile Safe Shower System.

THE INSTALLATION PROCESS

Our Tile Safe shower tray, standard or custom-made, together with the waste system available for your chosen plumber to install.

- The tray and easy-clean waste installed level as per the installation instructions by your plumber.
- GIB plaster board or other wall lining installed flush with the tray perimeter profile by your builder.
- Showerwell install the special plasticised wall liners and door/return wall channels.
- Tiler completes the necessary tiling of walls and tray, and tile grouting.
- Showerwell returns to site to install the shower door and/or returns, ensuring they are correctly sealed.





SOLUTIONS FOR EVERY SPACE

PROPRIETARY SHOWER TRAY

- Patented solid closed cell tray.
- Fibrous cement board for rigidity, sitting directly on the floor.
- Reinforced polymer tray surface.
- Integrally bonded waste system.
- High-strength, bright alloy tray perimeter profile.
- Tray profile reinforced matting.
- Membrane waterproof coating over entire tray surface.
- Central drain position on all trays, with back corner waste on selected sizes.
- Predetermined tray fall, saving time and making tiling easier.
- All trays are tank water tested in the factory before they are supplied to the installer.

STANDARD TRAY INSTALLATION

On floor installations. Nominal 68mm tray height (including aluminium perimeter profile) with 4mm - 10mm step-down depending on the tile thickness used.

WALL LINER

- Specialised high-impact plasticised wall liners.
- Two or three wall shower options.

EASY-CLEAN WASTE TRAP

- Waste outlet centre position or back corner position on selected sizes.
- 90° easy-clean waste - solvent joint.
- Straight through waste outlet - solvent joint.

TILE SAFE SHOWER DOOR OPTIONS

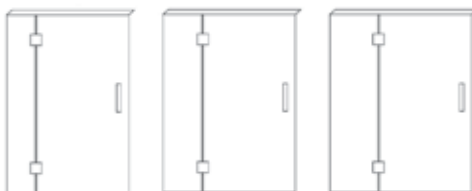


STERLING 10MM SPECIFICATIONS

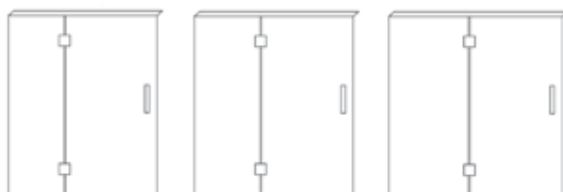
- 10mm glass thickness
- Standard height 1950mm (Nominal 2000mm with tray)
- Manufactured to NZ/AS Safety Standard NZAS2204:1996
- High-quality polished and bright anodised wall channels
- Available as magnetic seal or double swing action door
- Hinges: high-quality chrome plate on brass
- Handle options: Curved Designer, Post and Rail, Square D Style
- Standard sizes to match Tile Safe standard tray sizes
- Custom-made sizing to suit custom Tile Safe Tray dimensions

Three wall shower

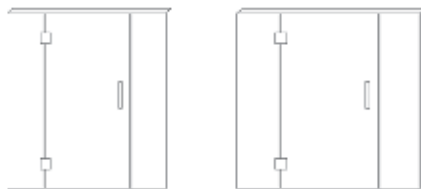
900mm x 900mm
1000mm x 1000mm
1200mm x 900mm



1400mm x 1000mm
1600mm x 1000mm
1800mm x 1000mm



1800mm x 1000mm
2000mm x 1000mm



Handle Options

Designer Post & Rail single or Designer Curved single are standard options. Other handles shown are optional extras.

Designer Post & Rail

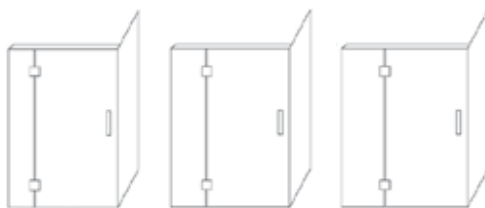


single

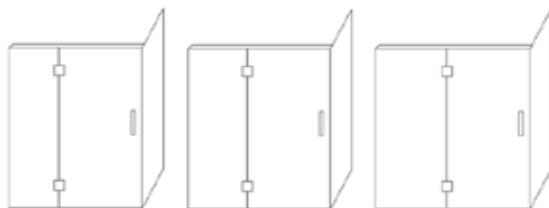
double

Two wall shower

900mm x 900mm
1000mm x 1000mm
1200mm x 900mm



1400mm x 1000mm
1600mm x 1000mm
1800mm x 1000mm



1800mm x 1000mm
2000mm x 1000mm



Designer Curved



single

10mm Stainless Steel Square



double

The Showerwell Sterling 10mm Tile Safe shower is also available as custom-made to suit your specific needs



10MM SLIDER SPECIFICATIONS

- 10mm glass thickness
- Standard height 1950mm (Nominal 2000mm with tray)
- Manufactured to NZ/AS Safety Standard NZAS2204:1996
- High-quality polished and bright anodised wall channels
- Polished stainless steel rollers and rail
- Handle: Square D style as standard.
- Options: Curved Designer, Post and Rail
- Standard sizes to match Tile Safe standard tray sizes: 1200mm, 1400mm, 1600mm, and 1800mm
- Doors can adjust to allow for custom-made tray sizing

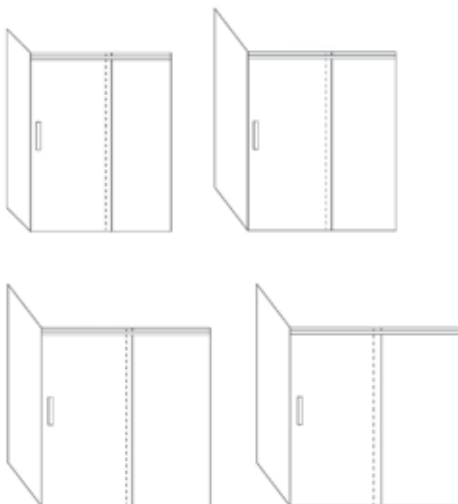
Three wall shower

1200mm x 900mm
1400mm x 1000mm
1600mm x 1000mm
1800mm x 1000mm



Two wall shower

1200mm x 900mm
1400mm x 1000mm
1600mm x 1000mm
1800mm x 1000mm



Handle Options

The 10mm stainless steel square single handle is the standard option. Other handles shown are optional extras.

Designer Post & Rail



single



double

Designer Curved



single

10mm Stainless Steel Square



double

The Showerwell Sterling 10mm Tile Safe shower is also available as custom-made to suit your specific needs



APOLLO SPECIFICATIONS

- 6mm glass thickness
- Framed return glass thickness
- Standard height 1950mm (Nominal 2000mm with tray)
- Manufactured to NZ/AS Safety Standard NZAS2204:1996
- High-quality polished and bright chrome frames and channels, satin anodised or white powder coat frames and channels
- Standard sizes to match all trays, or custom made to match custom made trays

Three wall shower

900mm x 900mm
1000mm x 1000mm
1200mm x 900mm



1800mm x 1000mm
900mm x 900mm
1000mm x 1000mm



Two wall shower

900mm x 900mm
1000mm x 1000mm
1200mm x 900mm



1400mm x 1000mm
1600mm x 1000mm
1800mm x 1000mm



45 degree showers

900mm x 900mm
1000mm x 1000mm





BETA DESIGNER STANDARD SIZES

- 6mm glass thickness
- Framed return glass thickness
- Standard height 1950mm (Nominal 2000mm with tray)
- Manufactured to NZ/AS Safety Standard NZAS2204:1996
- High-quality polished and bright anodised frames and channels, satin anodised or white powder coat frames and channels
- Handle options: Curved Designer or Post and Rail
- Standard sizes to match all trays, or custom made to match custom made trays

Three wall shower

900mm x 900mm
1000mm x 1000mm
1200mm x 900mm



1800mm x 1000mm
900mm x 900mm
1000mm x 1000mm



Handle Options

Designer Post & Rail single or Designer Curved single are standard options. Other handles shown are optional extras.

Designer Post & Rail



single

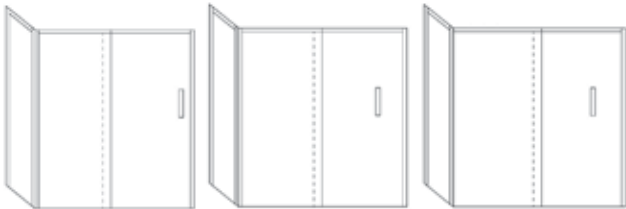
double

Two wall shower

900mm x 900mm
1000mm x 1000mm
1200mm x 900mm



1400mm x 1000mm
1600mm x 1000mm
1800mm x 1000mm



Designer Curved



single

10mm Stainless Steel Square



double

45 degree showers

900mm x 900mm
1000mm x 1000mm



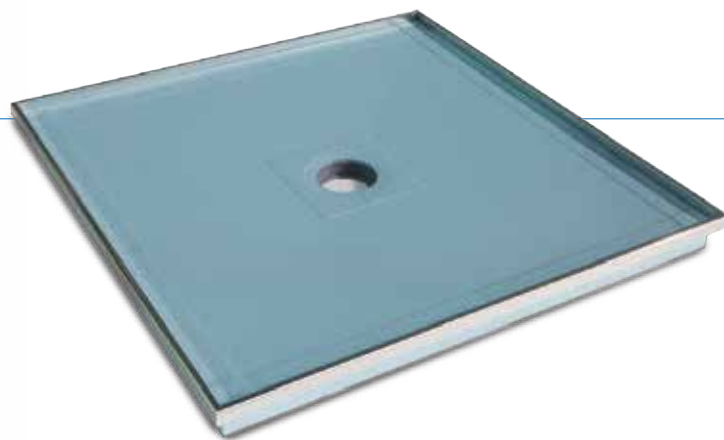
The Showerwell Beta Designer Tile Safe shower is also available as custom made to suit your specific needs



TILE SAFE SHOWER BASE COMPONENTS

Shower tray

Showerwell's Tile Safe System utilises the latest patented technologies to produce high-quality, high performance shower trays, as well as a waste system that is integral to the tray. The waste flange is bonded to the tray, eliminating any potential leaks in this area. The shower tray base is designed with high-impact, specialised wall liners.



Waste body

The Showerwell waste body is easy to install, and easy to clean

- Complete with internal trap
- Easy-clean waste straight through - fully revolving outlet
- Easy-clean waste 90° offset - fully revolving outlet



Tile insert/stainless steel shower grate

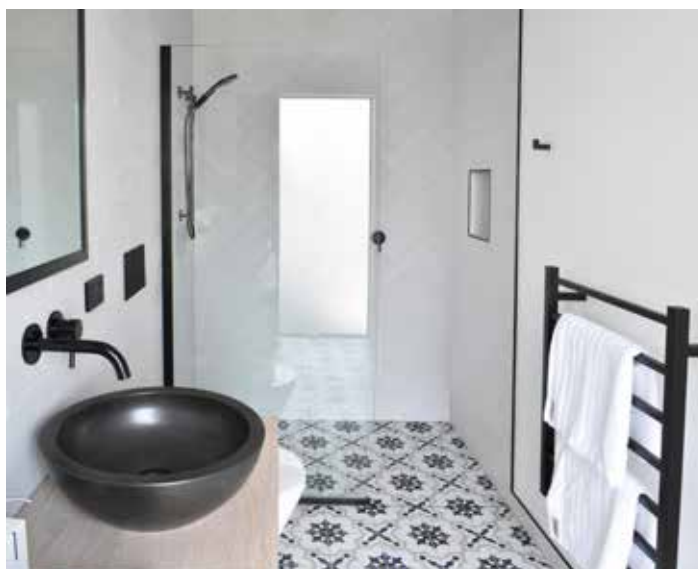
- Height adjustable threaded body to compensate for various tile thicknesses
- Reversible plate for stainless steel or tile insert for a seamless finish



Water Stops

By the very nature of the Tile Safe Shower System the shower door and return wall channels acts as vertical water stops

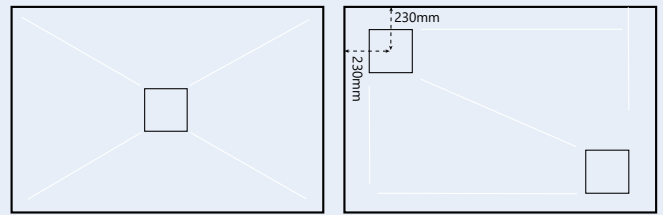
If a Fixed Shower Screen is being installed which only has a single wall channel a separate vertical water stop is installed on the opposite wall to the fixed screen, creating a fully enclosed system behind the tiles.



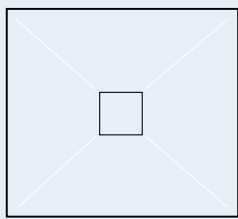
SHOWER TRAY

STANDARD SIZES

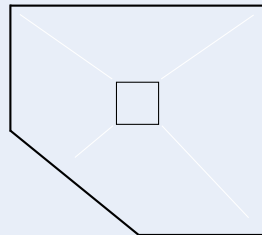
The Showerwell Tile Safe shower trays are also available as custom-made within the size constraints of the standard trays



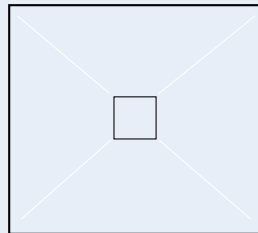
1200mm x 900mm – also available with waste position top left or bottom right (230mm from edge)



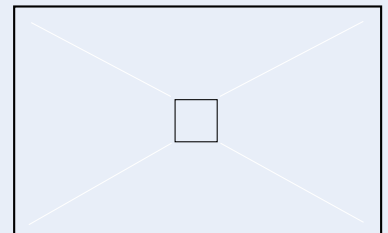
900mm x 900mm



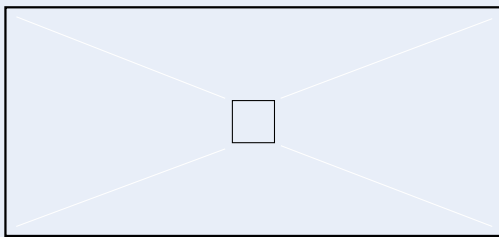
900mm x 900mm x 45 degrees
1000mm x 1000mm x 45 degrees



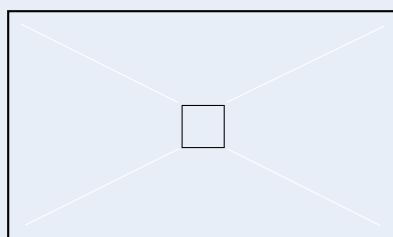
1000mm x 1000mm



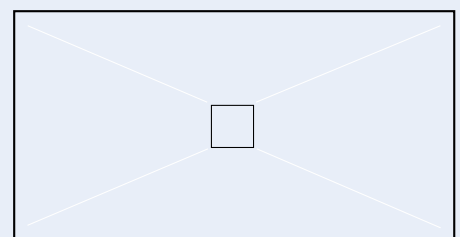
1400mm x 1000mm



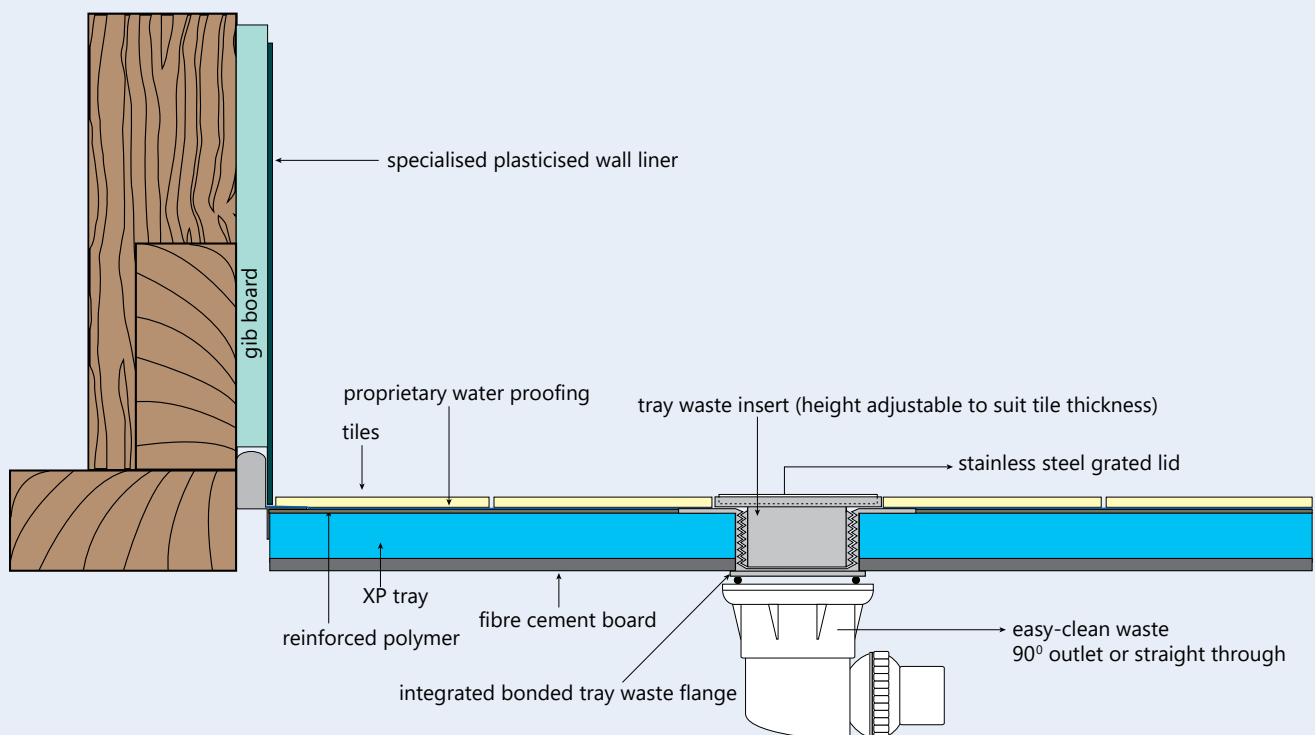
2000mm x 1000mm



1600mm x 1000mm



1800mm x 1000mm



SHOWER NICHE INSTALLATION



Shower niche specifications

- One-piece, recessed unit to hold accessories
- Watertight - polymer sealed, membrane waterproof coating and banding tape
- Fits 70mm - 90mm wall cavity or framing
- 10mm thick
- Suitable for Gib board or approved wall boards (10mm in thickness)
- Compatible with waterproof membranes
- Showerwell 5-year warranty

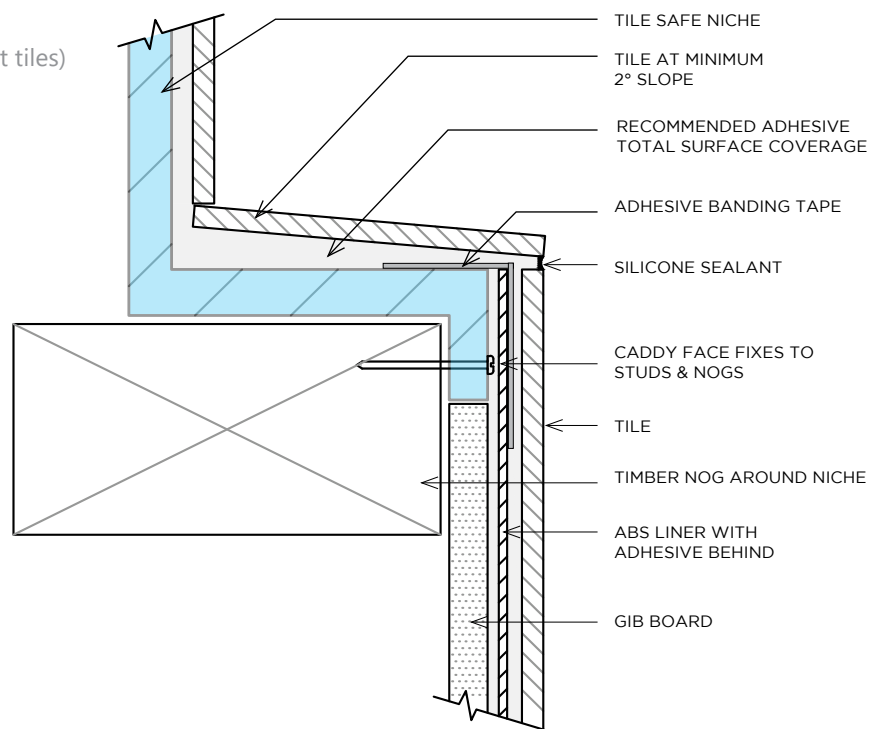
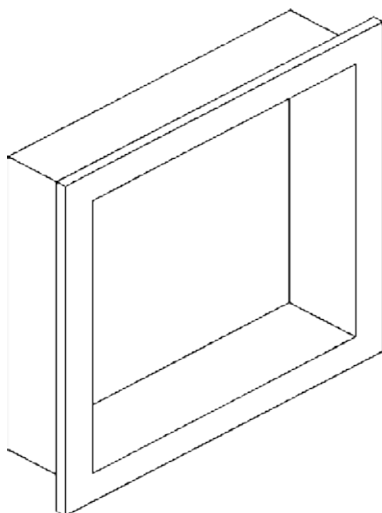
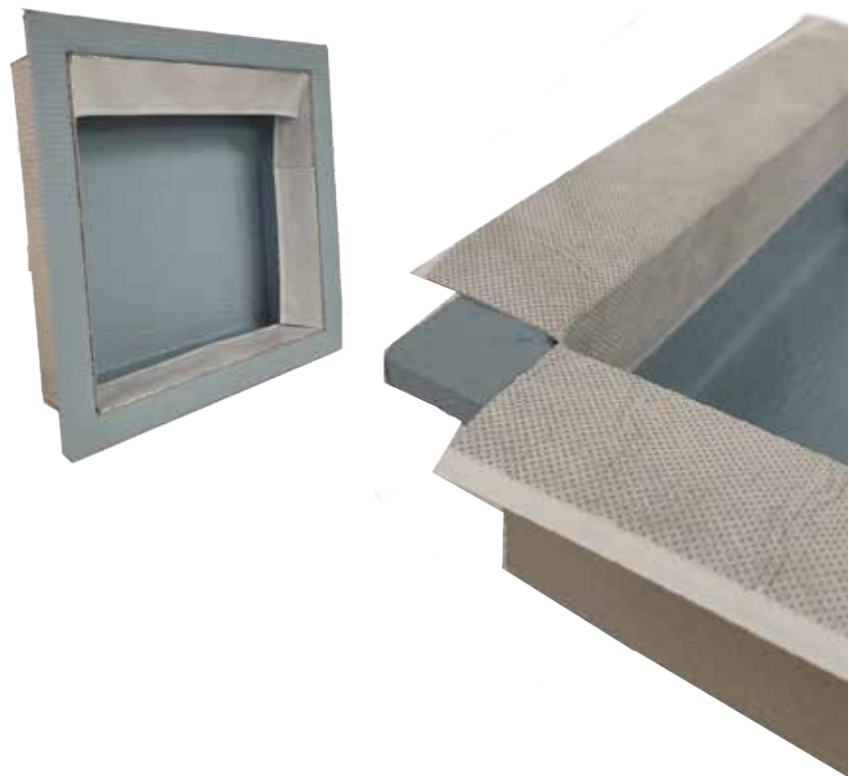
Niche Sizes

Small:

- Size overall: 360mm x 360mm x 80mm
- Size internally: 300mm x 300mm x 70mm (without tiles)
- Inside nog gap: 325mm x 325mm

Large:

- Size overall: 360mm x 595mm x 80mm
- Size internally: 300mm x 535mm x 70mm (without tiles)
- Inside nog gap: 325mm x 560mm



VISIT ONE OF OUR MULTIPLE LOCATIONS

ALBANY - Showroom

A: 14a Tawa Drive, Albany
P: 09 443 5633
E: takapuna@showerwell.co.nz

ST LUKES - Showroom & Manufacturing

A: 15 Gordon Road, St Lukes
P: 09 845 8212
E: stlukes@showerwell.co.nz

EAST TAMAKI - Showroom & Manufacturing

A: 21 Neilpark Drive, East Tamaki
P: 09 273 0151
E: easttamaki@showerwell.co.nz

WAIKATO

A: 31 Higgins Road, Frankton, Hamilton
P: 07 222 2783
E: waikato@showerwell.co.nz

TAURANGA (TILEMAX) - Showroom

A: 5a MacDonald Street, Mount Maunganui
P: 07 575 7755
E: tauranga@tilemax.co.nz

WELLINGTON - Showroom

A: 37 Hutt Road, Pipitea (Tilemax Building)
P: 04 499 4949
E: wellington@showerwell.co.nz

CHRISTCHURCH - Showroom

A: 182 Barbadoes Street, Central City
P: 03 343 2223
E: sales@maliagroup.co.nz
showerwellchristchurch.co.nz

