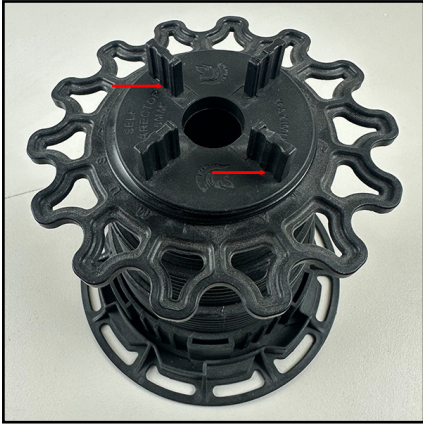


MAXPLUS

Maxplus Endura Pedestal Bracket and Profile Edge | Installation Advice



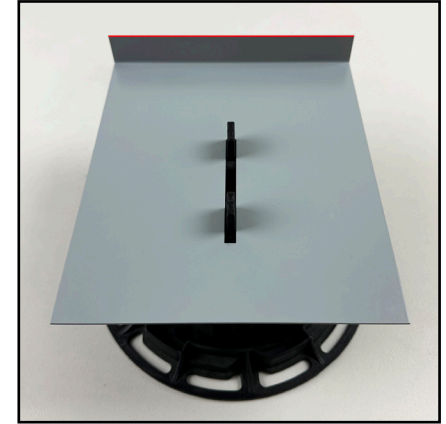
Step 1: Ensure pod is set to desired height. Break off two opposite spacer tabs on the pod head.



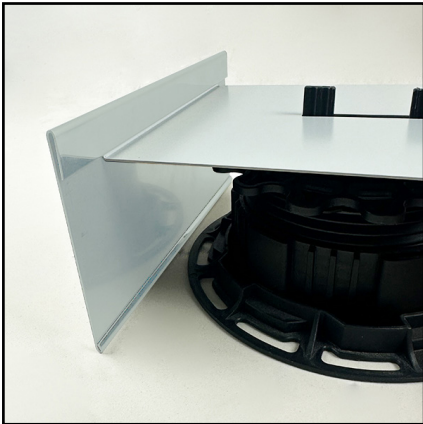
Step 2: Run a bead of Ardex CA20P Adhesive Silicone around the pod head.



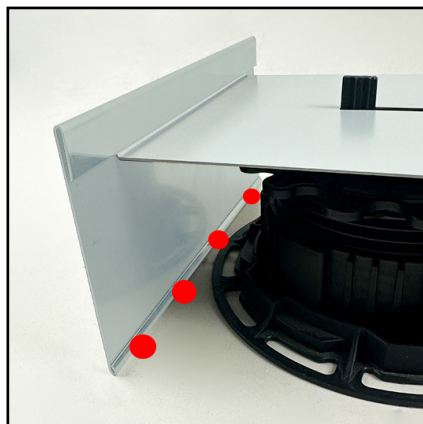
Step 3: Insert the pedestal bracket onto the CA20P Adhesive Silicone and allow to dry.



Step 4: On the upstand of the pedestal bracket run a bead of Ardex CA20P Adhesive Silicone for the profile edge to attach on to.



Step 5: Insert the profile edge on onto the bracket.



Step 6: Allow for Ardex CA20P Adhesive Silicone Spot Bonding at base of profile edge to perimeter flashing.

Note: For high wind zones, please seek engineer advice on stainless steel rivet fixing.

