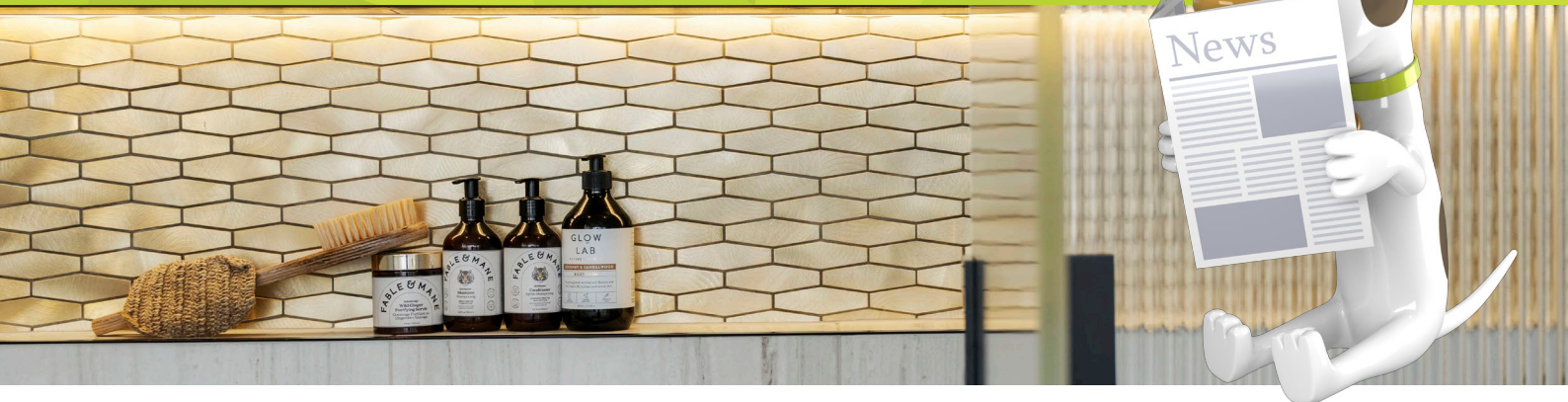


## MosaicFX Metal Cleaning and Maintenance Guide



### Instructions for the Care and Maintenance of the Tilemax MosaicFx Copper and Aluminium Range

#### Installation, Care and Handling:

Handling in transport and installation can always leave minor marks and blemishes on the surface of any metal mosaic. This may be friction and rub marks, subtle grout abrasions, handling impacts. We do not consider these to be faults but rather a natural overall effect. Metal mosaics in aluminium and copper will never be perfect, please select another item if this is your expectation.

#### MosaicFX Aluminium Mosaics:

An aluminium mosaic surface is naturally soft and is NOT abrasion resistant. This means it must be used on walls only. Any contact with acid or alkali onto the Aluminium mosaic surface should be avoided. In the event that acid or alkali chemicals, cleaners etc. do come in contact with the mosaic, immediately wash and rinse with plenty of water, then wipe dry with a soft, clean cloth.

MosaicFX metal mosaics are not designed for floor use or areas with higher than usual wear.

#### MosaicFX Copper Mosaics:

To produce metal copper mosaics, a process of natural oxidation process is used to ensure the natural look of copper. As the metal ages, and according to different conditions, the surface will change over time. This includes natural patina and in more extreme situations, Verdigris will develop. This is a normal aging process in high moisture / oxygen and sulphur conditions. It may be possible to polish back the copper to desired look.

Copper is a soft metal which is not resistant to acid or alkali, these factors will change the colour and appearance of the natural metal.

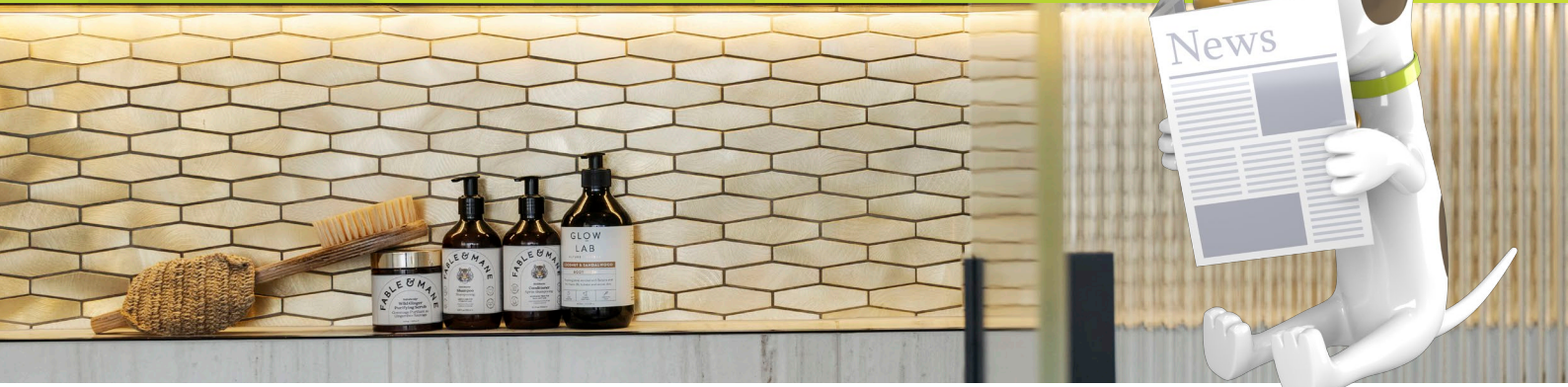
MosaicFX copper mosaics are not designed for floor use or areas with higher than usual wear.

## EVERBRITE™

We recommend the use of **Everbrite Coatings** for the cleaning and sealing of copper mosaics (and other metals surfaces within the home).

**HD Gel Copper Cleaner:** This product is a unique solution which has been blended specifically to remove tarnish and oxides from copper based metals. It is strong enough to restore tarnished and stained copper back to it's original copper shine – but is also environmentally safe as well – non-toxic, non-hazardous – it will not harm shrubs or plants.

## MosaicFX Metal Cleaning and Maintenance Guide



**ProtectaClear Coating:** This is a tough and durable coating with a pencil hardness of H8. It is the best coating for items that will be enduring high use. i.e. a lot of handling and abuse. It is also foodsafe once cured and will withstand heat up to 285 degrees centigrade before it begins to burn off. Available in both natural gloss and satin finish options.

**CrobialCoat:** This product combines the power of our ProtectaClear coating as a tough, durable clear coating with the added advantage of silver-ion antimicrobial technology.

For product information and instructions, go to [www.everbrite.co.nz](http://www.everbrite.co.nz)

For more information on copper mosaics, go to:  
[www.everbrite.co.nz/copper-protection-stop-tarnish-protect-patina](http://www.everbrite.co.nz/copper-protection-stop-tarnish-protect-patina)

**Purchasing:** All of the above Everbrite products must be purchased directly from Everbrite.

Tilemax customers will receive 15% off their order, simply email the team at [info@everbrite.co.nz](mailto:info@everbrite.co.nz), tell them you are a Tilemax customer and they will arrange your order and invoice from there.

Please note: The 15% discount only applies to small (5m<sup>2</sup>) medium (10m<sup>2</sup>) and large kits (20m<sup>2</sup>) (one coat coverage).

They cannot apply the 15% discount to Test Kits or Starter Kits.