

2025 Porcelain Paver Range





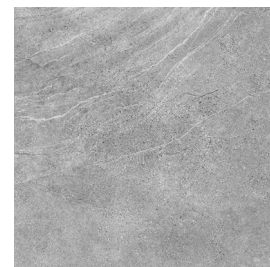
Endura Montana Beige
Porcelain Paver
600x600mm, 20mm



Endura Montana White
Porcelain Paver
600x600mm, 20mm



Endura Montana Grey
Porcelain Paver
600x600mm, 20mm



Endura Montana Dark Grey
Porcelain Paver
600x600mm, 20mm



Endura Montana Beige
20mm Dropdown Coping
450x600mm, 65mm Drop



Endura Montana White
20mm Dropdown Coping
450x600mm, 65mm Drop



Endura Montana Grey
20mm Dropdown Coping
450x600mm, 65mm Drop



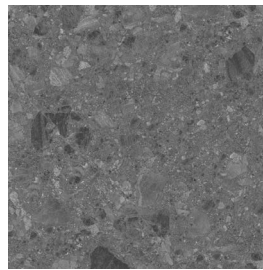
Endura Montana Dark Grey
20mm Dropdown Coping
450x600mm, 65mm Drop



Endura Palazzo Bianco
Porcelain Paver
600x600mm, 20mm



Endura Palazzo Terra
Porcelain Paver
600x600mm, 20mm



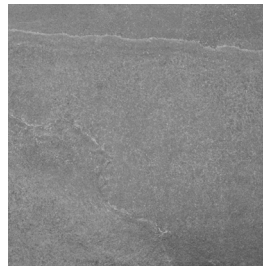
Endura Palazzo Anthracite
Porcelain Paver
600x600mm, 20mm



Artica Endura Bianco
Porcelain Paver
605x605mm, 20mm



Artica Endura Nube
Porcelain Paver
605x605mm, 20mm



Artica Endura Grigio
Porcelain Paver
605x605mm, 20mm



Endura Treviso
Porcelain Paver
600x600mm, 20mm



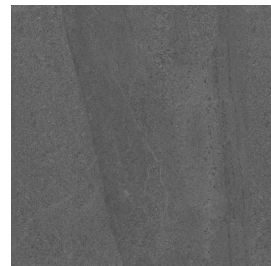
Endura Florence
Porcelain Paver
600x600mm, 20mm



Endura Cemento
Porcelain Paver
600x600mm, 20mm



Endura Crystal Grey
Porcelain Paver
600x600mm, 20mm



Endura Crystal Antracite
Porcelain Paver
600x600mm, 20mm



Endura Florence
Bullnose
300x600mm, 20mm



Endura Cemento
Bullnose
300x600mm, 20mm



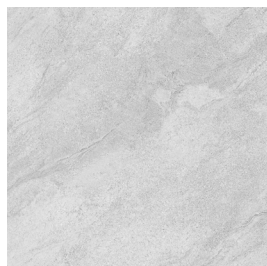
Endura Crystal Grey
Bullnose
300x600mm, 20mm



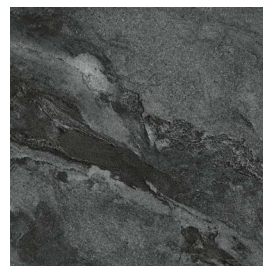
Endura Crystal Antracite
Bullnose
300x600mm, 20mm



Endura Sierra Avorio
Porcelain Paver
600x600mm, 20mm



Endura Sierra Grigio
Porcelain Paver
600x600mm, 20mm



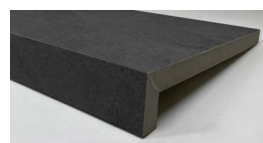
Endura Sierra Anthracite
Porcelain Paver
600x600mm, 20mm



Endura Sierra Avorio
Dropdown Coping
300x600mm, 20mm



Endura Sierra Grigio
Dropdown Coping
300x600mm, 20mm



Endura Sierra Grigio
Dropdown Coping
300x600mm, 20mm

Dropdown Coping Installation Guide

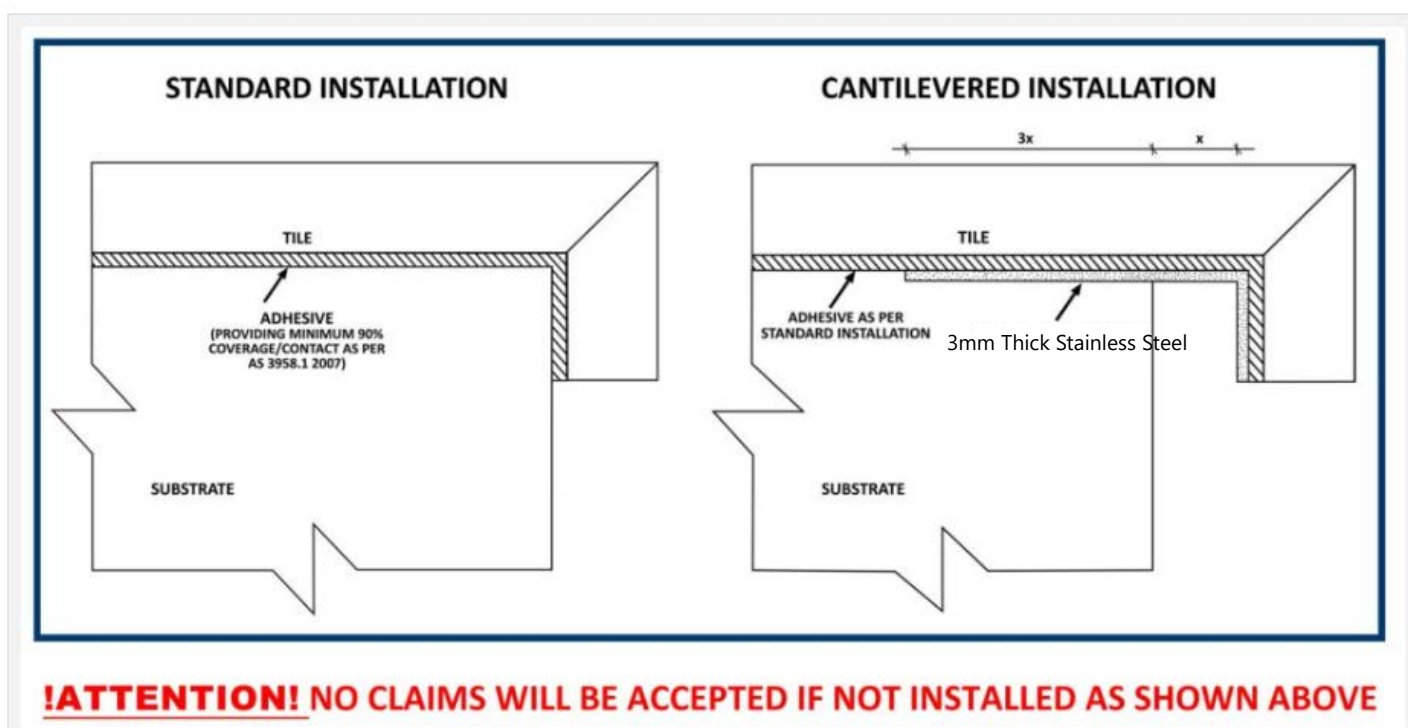


Please ensure these Dropdown Coping tiles are securely bonded to the substrate with full adhesive coverage on both the tile body and vertical drop face.

This is critical for achieving a strong bond in line with current tiling standards and adhesive manufacturer recommendations. If the substrate is out of square/unlevel, a support profile may be needed, or an alternative product, such as a bullnose or pool edge tile, could be considered.

Please refer to the below hyperlinks to your preferred supplier product and installation method. NB the attachments are a guide we advise requesting site specification for your preferred supply and refer you to their website for up to date technical information.

- [Ardex Pool Document - General Advice](#)
- [Ardex - Tilemax Pool Coping](#)
- [Sika/Davco - Fibreglass Pool Tiling](#)
- [Sika/Davco - Waterproofing and Tiling of Swimming Pools \(concrete\)](#)
- [Mapei - Tile to Concrete](#)
- [Mapei - Tile to Fibreglass](#)



MAXIMUS

PEDESTAL SYSTEMS



Less is More

Maximus Adjustable supports for exterior elevated floors, it's the most innovative solution that can be used on all of your installations. The simplicity and functionality of this system is to make the job easier and efficient.

4mm spacer tab included with all pedestals



Maximus Junior
20mm - 45mm



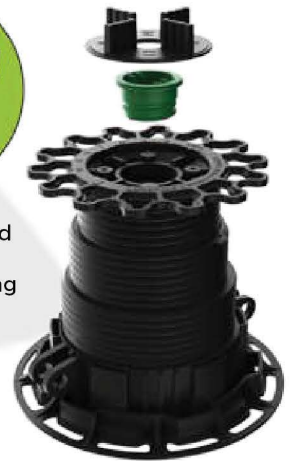
Maximus Senior
45mm - 145mm



100mm extenders
available to achieve
heights up to 1000mm



Switch from fixed to self leveling head by removing the Green plug



Maximus Senior Pro Level

Fixed / Self leveling head

Maximus eliminates 3-4 pedestals from our competitors range

- 1 PEDESTAL (RANGE 45MM - 145MM)
- 2 PRODUCTS FOR UNLIMITED HEIGHT (100MM) EXTENDERS SOLD SEPARATELY)
- 3 OPTIONS TO OPERATE ADJUSTMENT



Maximus add ons available for order



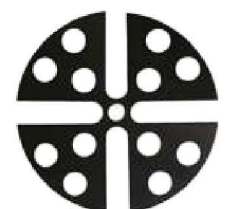
Timber Joist Bracket replaces the 4mm tile spacer tab for decking application



1 - 3 degree stackable base slope correctors



100mm extenders



1mm Rubber Shim