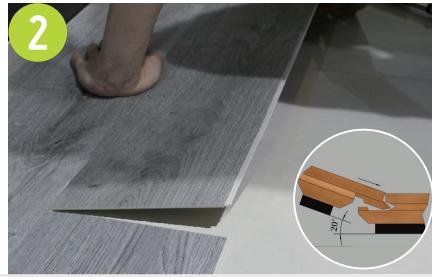
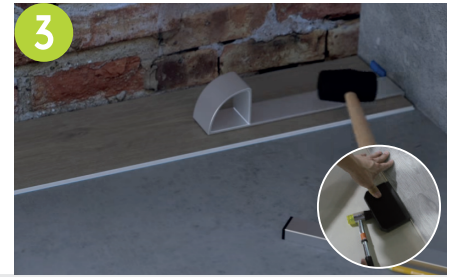


- Provide a 10mm expansion gap between the Max Floor and your walls or fixed objects. This is allowance for the minimal expansion rate which is  $-/+ 0.1\%$  average. When skirting is installed, ensure there is an expansion gap beneath.



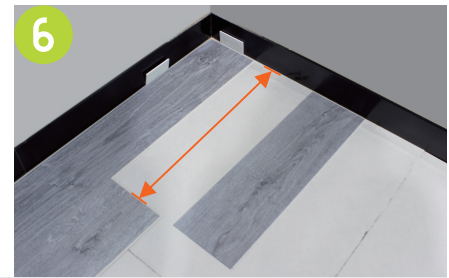
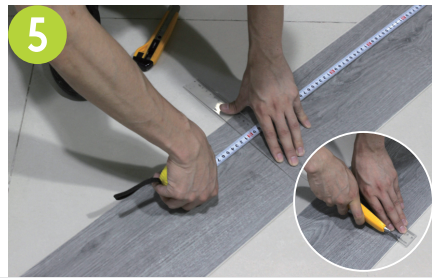
- Match the long edge first, keep an angle of  $-/+ 20^\circ$  when inserting. Make sure the short sides are as close together as possible, e.g. 10mm or less.



- Use a pulling iron and mallet to gently tap the short side into place, then use a tapping block to fasten the locking system on the long side.



- Measure and cut the plank to the required size and ensure the perimeter gap is maintained. Any off-cuts (min 300mm) from one end can be used to start the new run which ensures a natural random joint structure. Please also ensure on installation that each row is staggered so that no joints are closer than 300mm.



## Care Instructions



- When vacuuming, use the soft bristle attachments.
- Sweep and / or vacuum on a regular basis.
- Clean up any spills immediately.
- Use a damp mop or microfibre mop to clean floor with mild PH Neutral Cleaner.
- We do not recommend steam cleaners.
- No oil or waxes.
- Always use furniture feet protection - under chair and table legs etc.
- Never use abrasive cleaners on your Max Floor.
- Do not slide/drag heavy items across your Max Floor.

**Read these instructions fully before you start any installation work.  
Incorrect installation will void any warranties applicable.**

1. Check you have enough Max Floor product to complete your flooring allowing for 10% wastage for cutting etc. This should also allow for some spare after product completion for any future repairs.
2. Check your subfloor before installation - it must be dry and clean before laying any boards. Check that the surface is flat, meaning within 3mm over a 3 meter span. If you have a greater variation than this, then a self-levelling compound can be used, we recommend Davco Levelling products.
3. To stop gripping and allow slip, in areas where Max Floor will be layed over an existing timber or particle board substrate, a polythene slipsheet must be installed first.
4. To provide the best colour blend, please ensure you open and install from 3-4 boxes at a time.
5. Any greater spans than 10 metres in one direction must be broken up by an expansion joint. Expansion joint should be 6-10mm and can be finished with a T-Profile trim.
6. Max Floor can be installed over under floor heating. Please ensure that the heating is evenly distributed and the floor temperature does not exceed 30°C.
7. Normally Max Floor will not require acclimatisation. The exception is if it has been in extreme storage either below 10°C or over 40°C. If this has been the case, acclimatise for 24+ hours in the project location.
8. Max Floor is a waterproof material, but that does not mean that water cannot pass through joints etc. especially if left for over 24 hours. General water spillage in the kitchen and bathroom won't damage the floor but we recommend cleaning up water spillage as soon as possible, within 24 hours.
9. According to NZ/AUS flooring standards, concrete floors must have a relative humidity level of no more than 75% before floor coverings can be installed. Anything over this can compromise the product, and will void all warranties. If in doubt, we recommend doing a polythese patch test prior to laying.
10. Max Floor is designed to be installed as a floating floor and an allowance of 6-10mm minimum (depending on your substrate) must be allowed around the edge of the room. Always run underneath kitchen cabinet kickboards. Note that if the room gets significant sun, allow minimum 10mm around edge. Please ensure when laying the skirting board over the laminate to leave an expansion gap beneath.
11. Always try to lay the Max Floor in the linear direction of the sun or main light source.
12. Surface and substrate temperatures for product in direct sunlight must not exceed 45°C.
13. If you need to disassemble your floor, separate by lifting a whole row together at an angle. Then once separated lay the boards flat and slide them apart.
14. Do not install kitchen cabinetry or fixed objects on top of your Max Floor.

***Max Floor should not be installed in areas prone to flooding or temperatures exceeding 0-45°C.*** Max Floor is manufactured to be stable in temperatures 0-45°C but it is crucial to safeguard your flooring against harsh, direct sunlight and extreme temperatures. This can be done with interior climate control, window tinting and/or the use of curtains and blinds. Any sudden shifts in temperature or humidity may cause joints to cup or shift, and extended exposure to sunlight may cause fading.