

Davco K10 Range used with Neptune Waterstops

Sika Australia approves the use of Davco K10 Plus (Green & Grey) and Davco K10 rapid Waterproofing membranes when used in conjunction with Neptune waterstops strict installation instructions, Davo K10 Plus product data sheet and other relevant industry standards and codes.

Installation Instructions

Step 1 Prepare the substrate

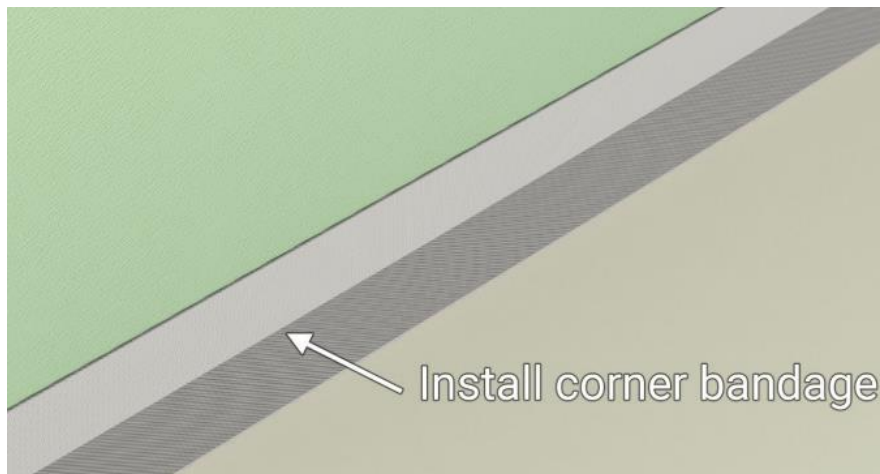
Substrates shall be prepared in accordance with relevant industry standards and AS 3740:2021.

Substrates shall be clean and free from dust, debris and other bond inhibiting contaminants.

Apply a suitable Sika Primer (refer to product pds) to substrates as required and allow primer to dry primer to application.

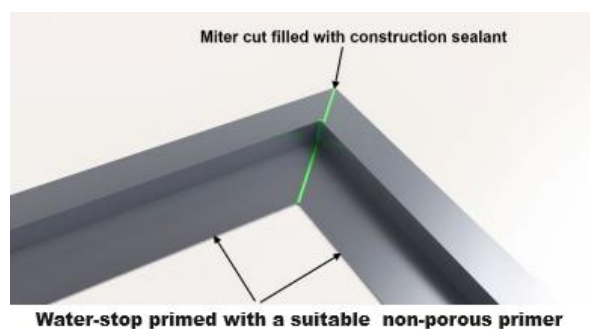
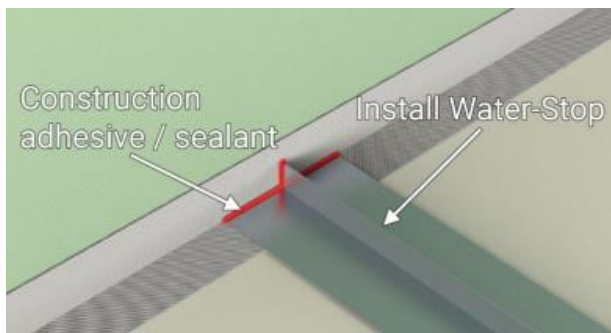
Step 2 Install the corner tape

Install generic self-adhesive butyl tape to floor wall junctions as required. Ensure tape is completely flattened to avoid air pockets. This will allow the NT Waterstop to sit flush against the tape. A membrane roller can assist to remove air pockets and ridges.



Step 3 Install the NT Waterstop

Apply a suitable Sika sealant (ie Sikasil 702)



Measure the area where the NT Waterstop is to be installed.

Cut the NT Waterstop to length, making sure to mitre the external corner and keeping the mitre tight to allow the NT Waterstop to work correctly.

Make sure the NT Waterstop is clean and dry. Apply the Sikaflex-123 MS Bond adhesive in two even beads along the length of the bottom of the NT Waterstop.

Install the NT Waterstop onto the substrate, making sure to firmly push the NT Waterstop down to allow the adhesive to bond correctly to the substrate.

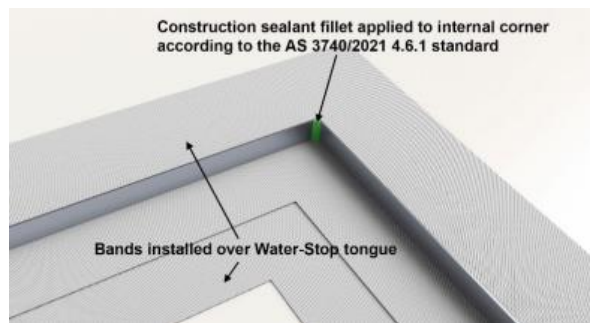
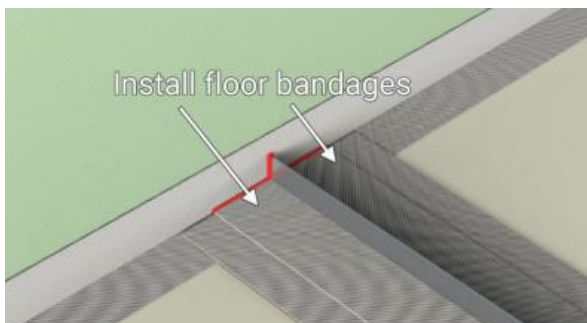
Once the NT Waterstop has been installed, apply the Sikaflex-123 MS Bond adhesive to the external and internal corners and termination points to fully seal the NT Waterstop in place.

On the internal corner of the external mitre, make sure to apply a sealant fillet at least 6mm wide from the bottom of the vertical leg to the top, making sure to smooth it off for ease of detailing.

*(refer to the Sikaflex-123 MS Bond technical data sheet for instructions on how to

prepare substrates for adhesive: <https://nzl.sika.com/en/construction/adhesives/general-bonding/sikaflex-123-msbond.html>

Step 4 Installing the band either side of the NT Waterstop



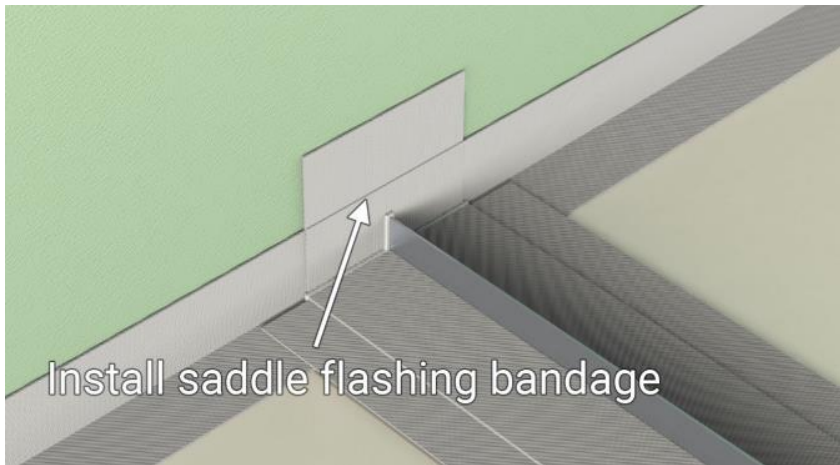
Once the NT Waterstop has been installed correctly, the self adhesive butyl tape can be applied to both sides of the NT Waterstop to seal it in place.

When the self adhesive butyl tape is installed on both sides of the NT Waterstop, the tape should come up to the bottom of the vertical upstand to allow maximum coverage of the tape onto the NT Waterstop.

Use a membrane band roller to removes any ridges or bubbles in the band

Step 5 Applying the saddle flashing

PTO



Once the self adhesive buytl tape has been installed either side of the NT Waterstop, a saddle flashing is to be applied over the termination point to aid in sealing the NT Waterstop.

To achieve this, a piece of self adhesive buytl tape is used, a cut the same length as the vertical upstand of the NT Waterstop is made into the centre of the tape, and the tape can then fit right over the top of the NT Waterstop on the termination point with it lapping down tightly onto the existing tape and over the Sikaflex-123 MS Bond adhesive.

Use a membrane band roller to removes any ridges or bubbles in the band.

Step 6 First Coat of Davco K10 Plus membrane

Apply a single coat of Davco K10 Plus to required areas.

Ensure application and thickness is in accordance with the product datasheet

Make sure to apply waterproofing over the internal corner of the external mitre, where the sealant fillet is, this allows the waterstop to be completely sealed. Any exposed metal requiring a waterproofing membrane applied directly to it will require priming with a suitable non porous primer outlined in the product datasheet before the membrane is applied.

Allow the first coat on membrane to dry prior to subsequent coats.

Step 7 Installing the NT Wall Waterstop



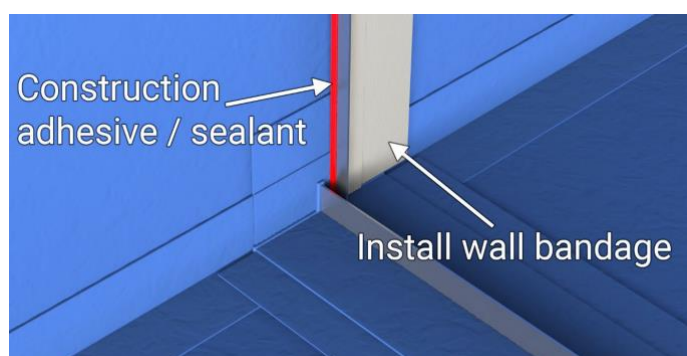
Once the first coat of membrane has dried the NT Wall Waterstop can be installed.

Using a spirit level or laser level, plumb a pencil line approximately 10mm from the NT Floor Waterstop on the inside of the shower where the shower glass wall channel will sit.

Once a level line has been created, Sikaflex-123 MS Bond adhesive can be applied to the back of the NT Wall Waterstop and the Waterstop can be applied to the wall.

Take care when installing the Waterstop to apply it plumb and flat on the shower wall, doing this will make tiling easier and ensure that the Waterstop works correctly

Step 8 Installing the Wall bandage



After installing the NT Wall Waterstop measure and cut the self-adhesive butyl tape to the same length as the NT Wall Waterstop.

Carefully apply the bandage onto the NT Wall Waterstop so it overlaps from the NT Wall Waterstop onto the existing membrane.

Use a Membrane Band roller to firmly adhere the bandage to the surface of the existing membrane.

Using Sikaflex-123 MS Bond adhesive, seal the front edge of the NT Wall Waterstop as shown in the diagram above, and clean off any excess

Step 9 Applying the second Coat of Davco K10 Plus

Apply a single coat of Davco K10 Plus to required areas.

Ensure application and thickness is in accordance with the product datasheet.

Ensure final coat is dry prior to commencement of tiling.

Important considerations

- Use products in accordance with relevant industry standards and product data sheet.
- Allow products to dry and cure prior to returning to service

Kind regards

Nick Collett

A handwritten signature in black ink that reads "N Collett".

Product Manager BF & Cement Flooring

Sika Australia

Robert Luc

A handwritten signature in black ink that reads "R. Luc".

National Sales Manager

Sika Australia