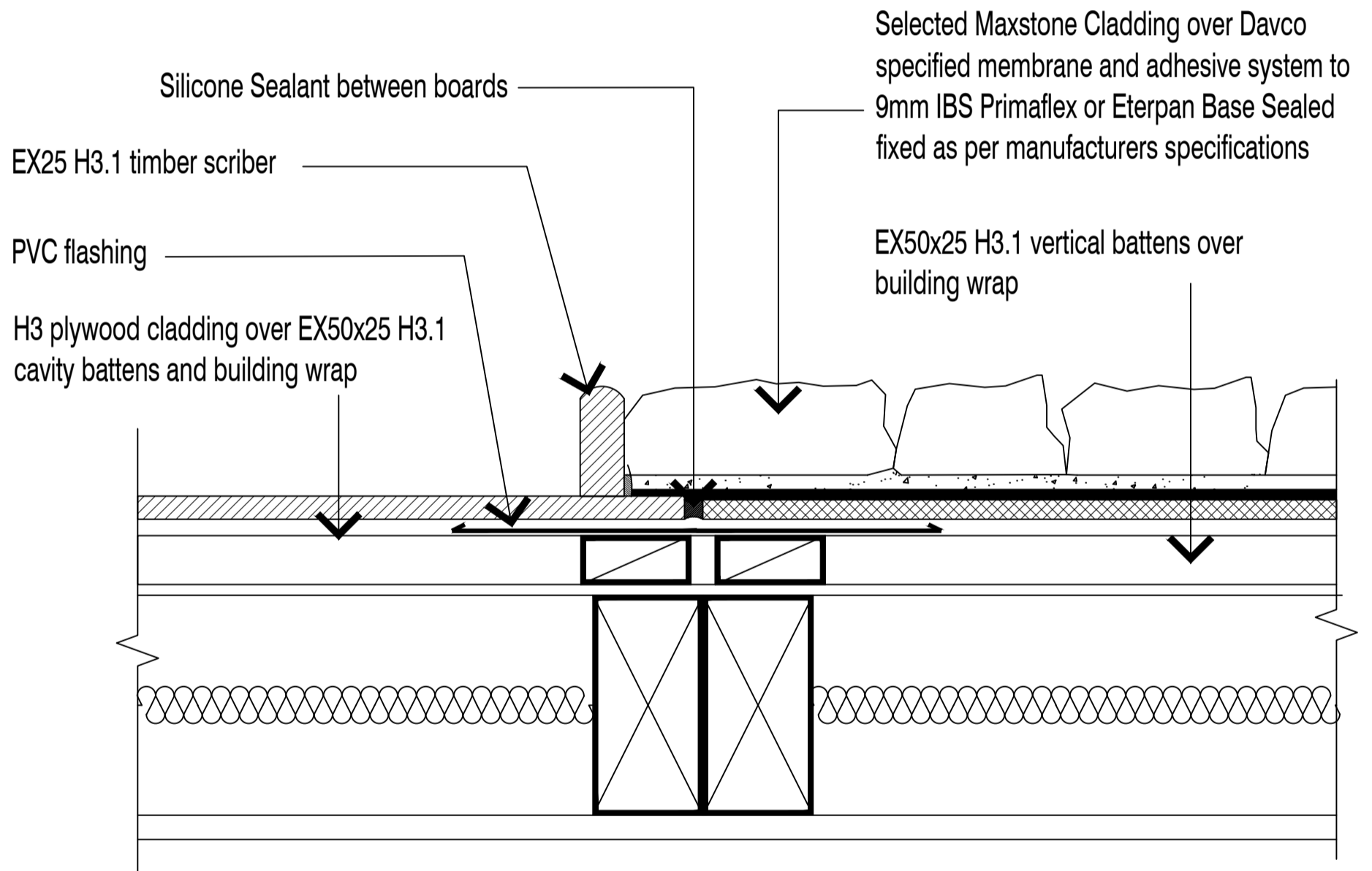




VENEER TO PLY - VERT. JOINT II

Scale NTS	Date 26/08/2019
TILEMAX	MAXSTONE



- NOTE:** MEMBRANE FINISH JUNCTION TO BE SILICONE SEALED
- NOTE:** EX50X25 BATTENS CAN BE SUBSTITUTED WITH EX50X50 WHERE APPROPRIATE
- NOTE:** SUBSTRATE TO BE FIXED IN STRICT ACCORDANCE WITH MANUFACTURER RECOMMENDATIONS AND LITERATURE