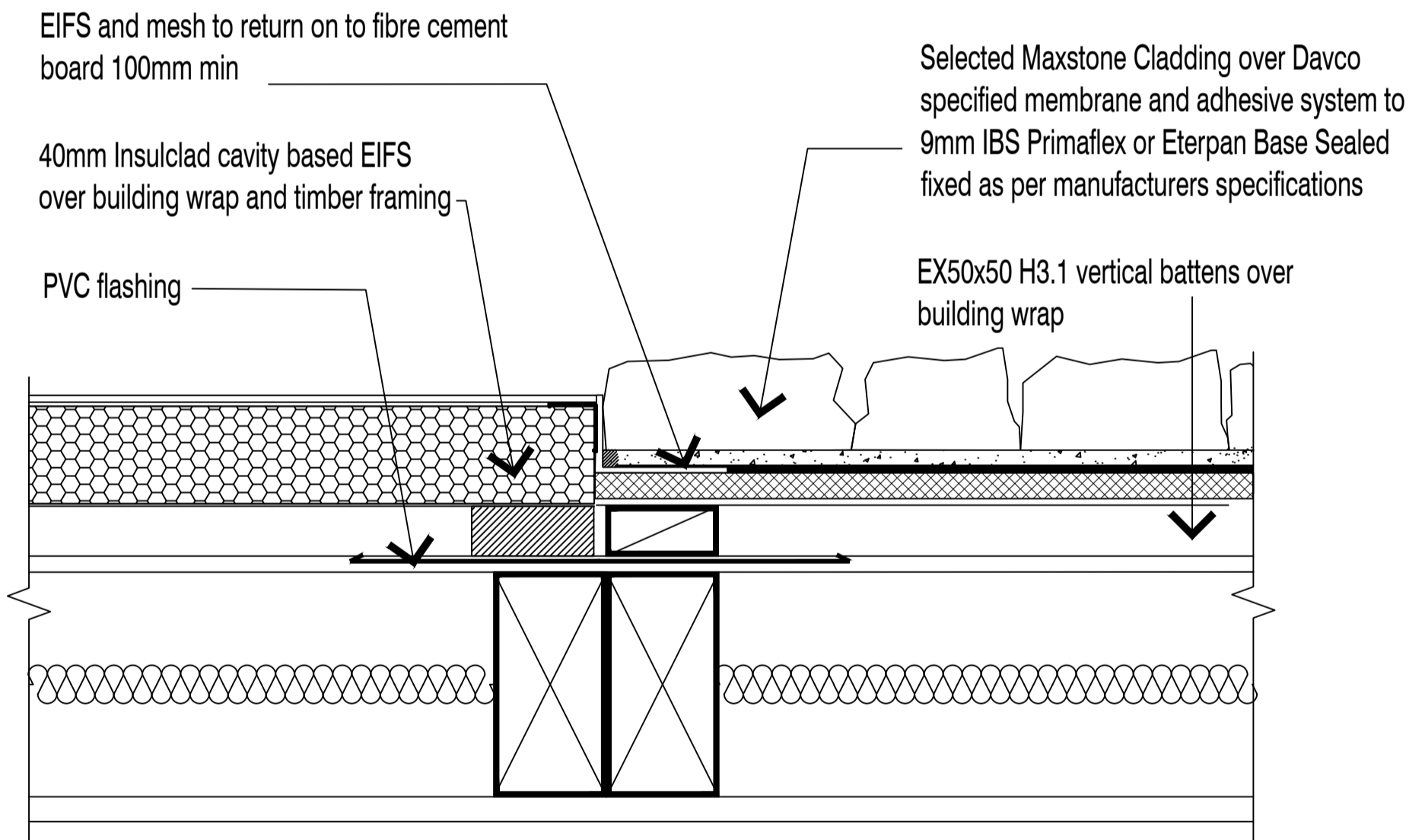




# VENEER TO EIFS - VERT. JOINT

Scale	Date
NTS	26/08/2019
TILEMAX	MAXSTONE



**NOTE:** MEMBRANE FINISH JUNCTION TO BE SILICONE SEALED

**NOTE:** EX50x25 BATTENS CAN BE SUBSTITUTED WITH EX50x50 WHERE APPROPRIATE

**NOTE:** SUBSTRATE TO BE FIXED IN STRICT ACCORDANCE WITH MANUFACTURER RECOMMENDATIONS AND LITERATURE