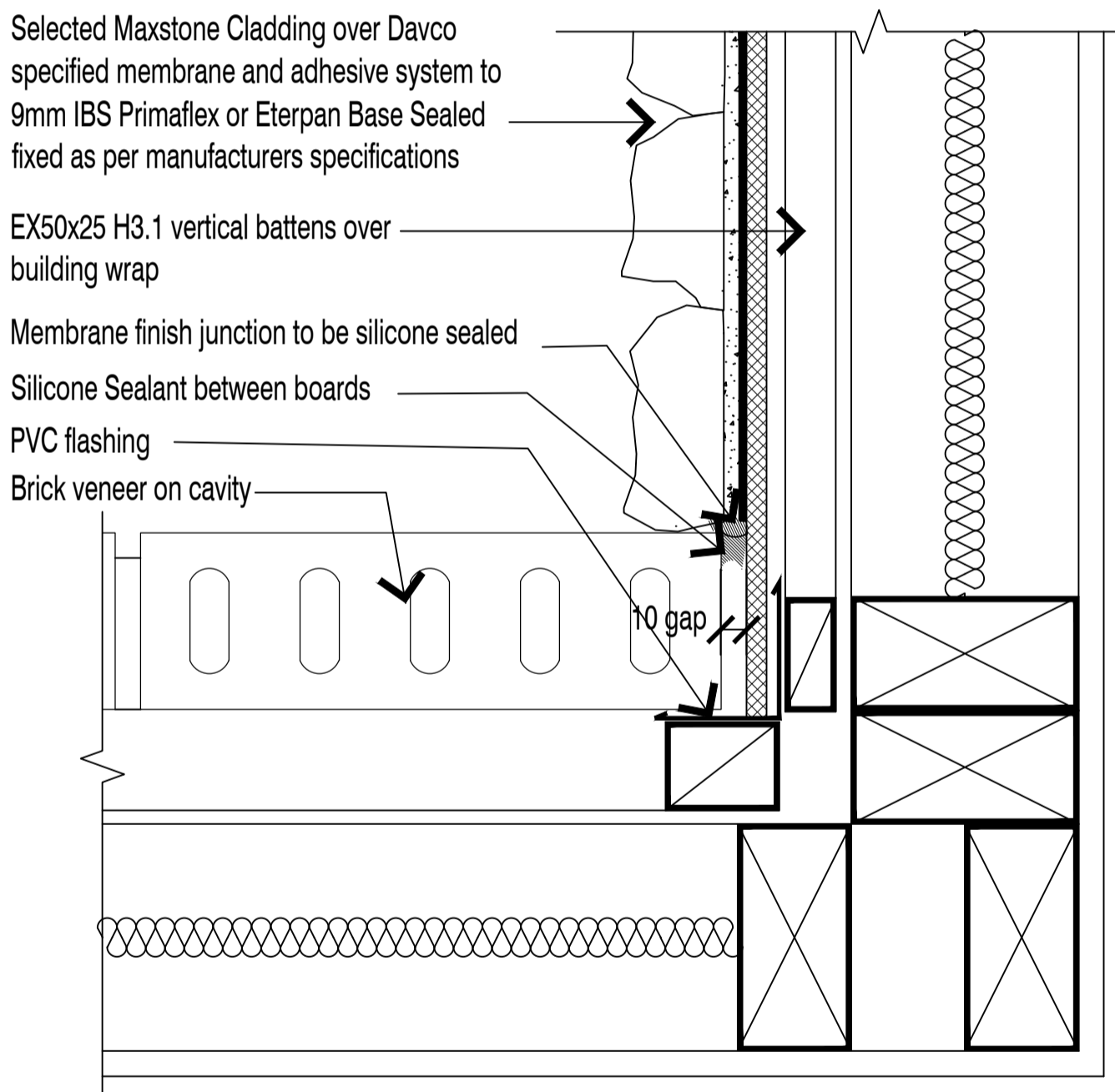




<h1>INTERNAL CORNER MONIER BRICK</h1>	Scale	Date
	NTS	26/08/2019
	TILEMAX	MAXSTONE



**NOTE:** MEMBRANE FINISH JUNCTION TO BE SILICONE SEALED

**NOTE:** EX50X25 BATTENS CAN BE SUBSTITUTED WITH EX50X50 WHERE APPROPRIATE

**NOTE:** SUBSTRATE TO BE FIXED IN STRICT ACCORDANCE WITH MANUFACTURER RECOMMENDATIONS AND LITERATURE