



# INT. CORNER WITH W/B's II

Scale	Date
NTS	26/08/2019
TILEMAX	MAXSTONE

Selected Maxstone Cladding over Davco specified membrane and adhesive system to 9mm IBS Primaflex or Eterpan Base Sealed fixed as per manufacturers specifications

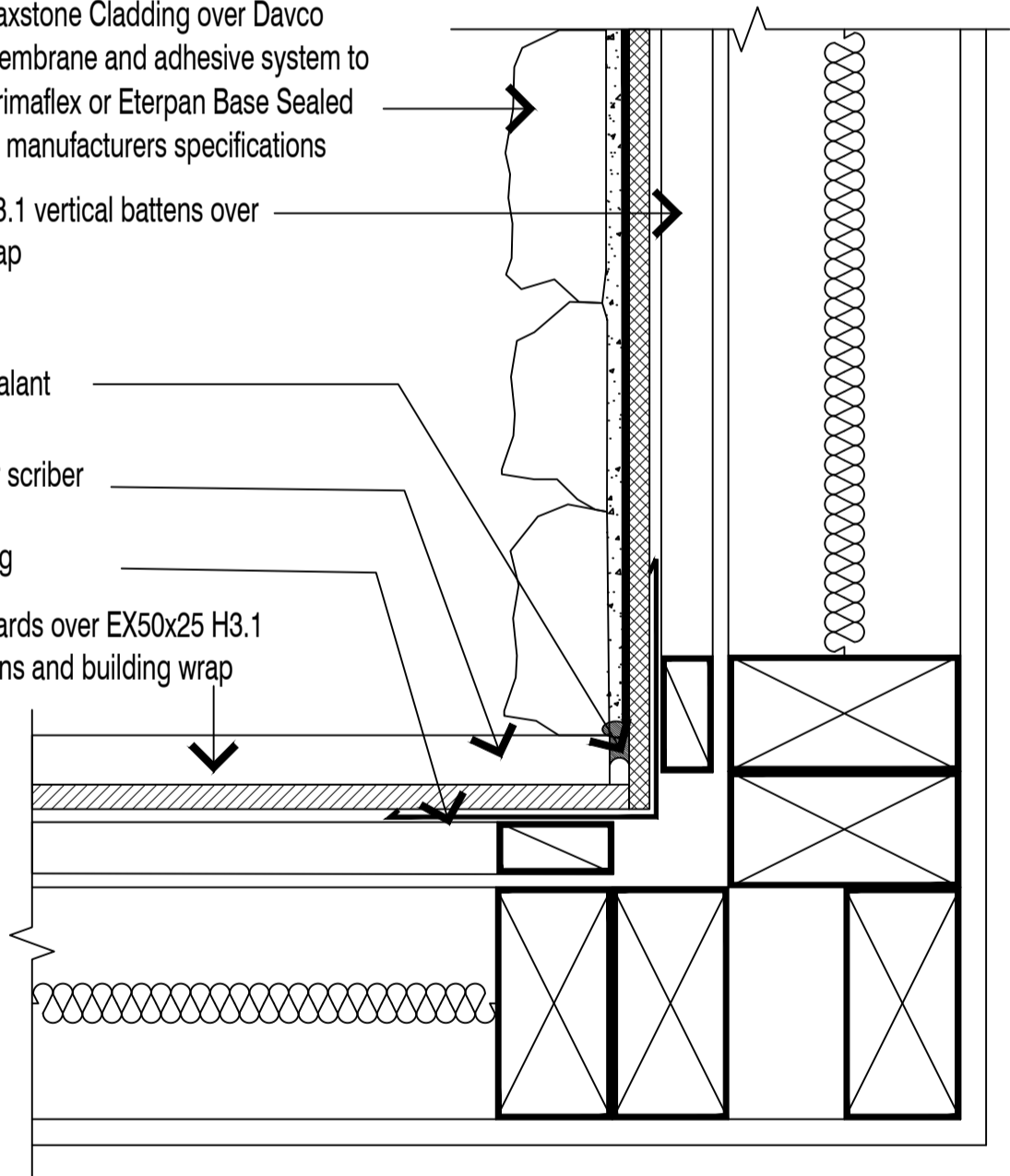
EX50x25 H3.1 vertical battens over building wrap

Silicone Sealant

H3.2 timber scribe

PVC flashing

Weatherboards over EX50x25 H3.1 cavity battens and building wrap



**NOTE:** MEMBRANE FINISH JUNCTION TO BE SILICONE SEALED

**NOTE:** EX50X25 BATTENS CAN BE SUBSTITUTED WITH EX50X50 WHERE APPROPRIATE

**NOTE:** SUBSTRATE TO BE FIXED IN STRICT ACCORDANCE WITH MANUFACTURER RECOMMENDATIONS AND LITERATURE