



<h1>INT. CORNER WITH PLY CLADDING II</h1>	Scale NTS	Date 26/08/2019
	TILEMAX	MAXSTONE

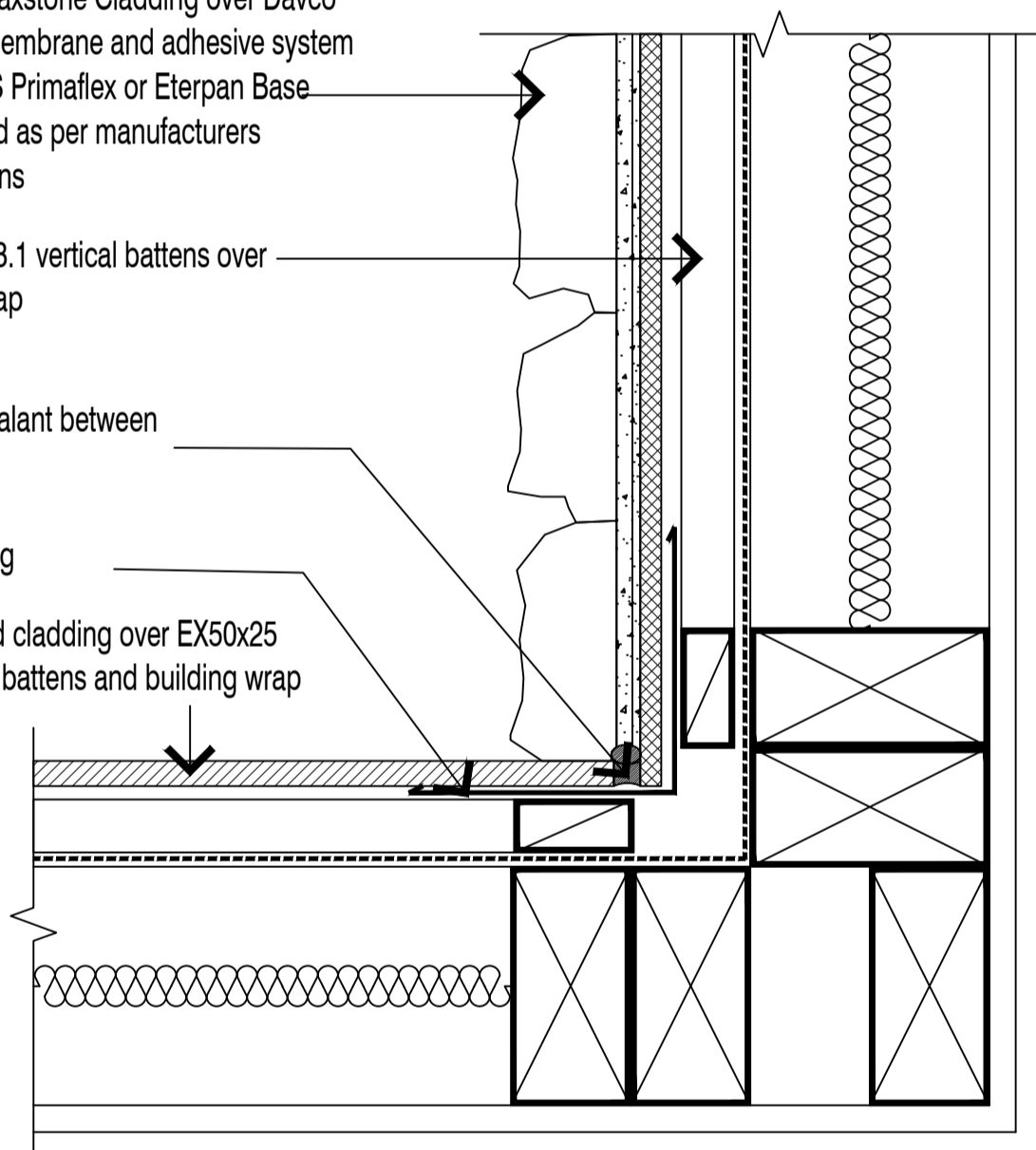
Selected Maxstone Cladding over Davco specified membrane and adhesive system to 9mm IBS Primaflex or Eterpan Base  
Sealed fixed as per manufacturers specifications

EX50x25 H3.1 vertical battens over building wrap

Silicone Sealant between boards

PVC flashing

H3 plywood cladding over EX50x25 H3.1 cavity battens and building wrap



**NOTE:** MEMBRANE FINISH JUNCTION TO BE SILICONE SEALED

**NOTE:** EX50X25 BATTENS CAN BE SUBSTITUTED WITH EX50X50 WHERE APPROPRIATE

**NOTE:** SUBSTRATE TO BE FIXED IN STRICT ACCORDANCE WITH MANUFACTURER RECOMMENDATIONS AND LITERATURE