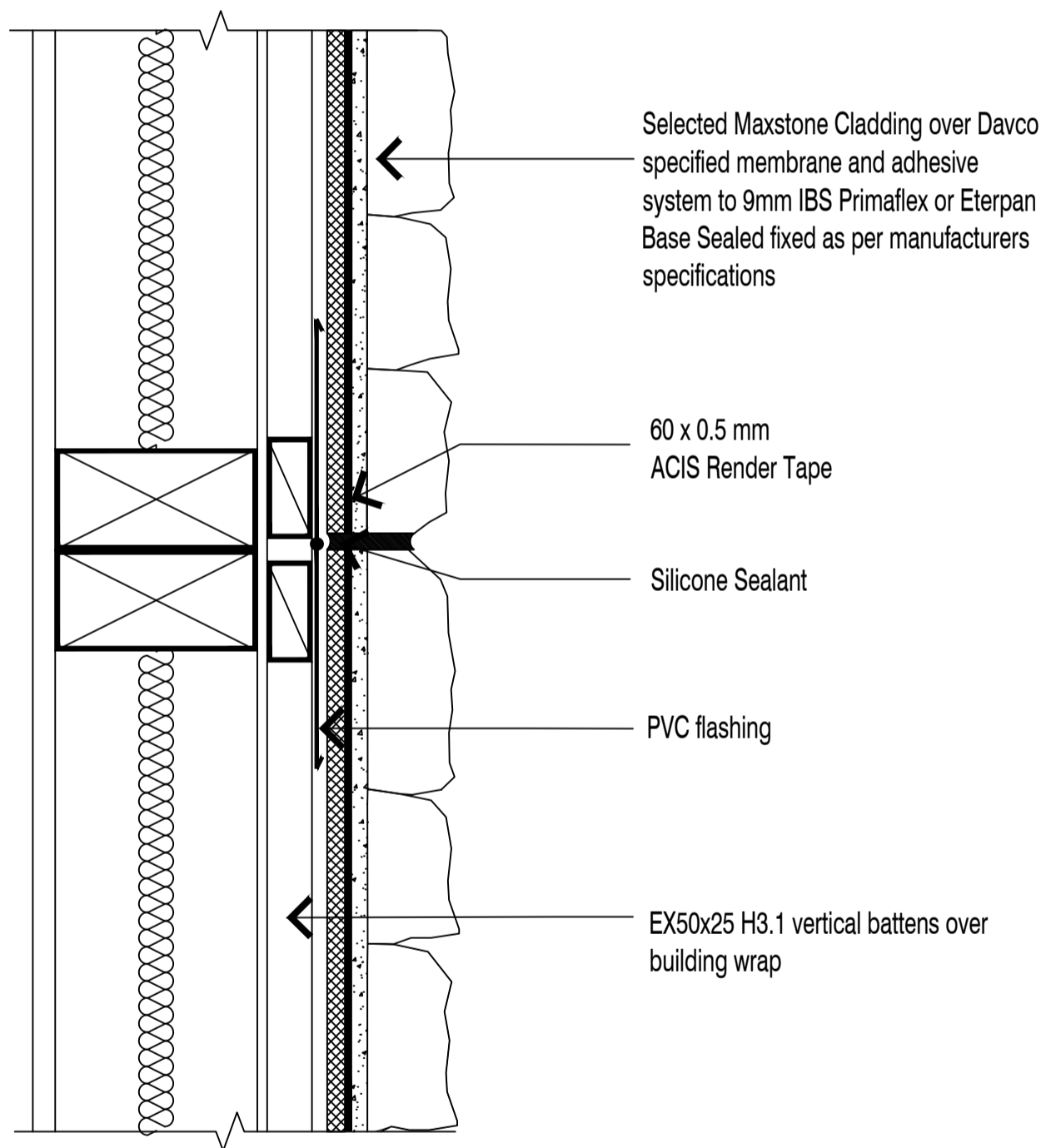




# HORIZONTAL CONTROL JOINT DETAIL I

|         |            |
|---------|------------|
| Scale   | Date       |
| NTS     | 27/08/2019 |
| TILEMAX | MAXSTONE   |



**NOTE:** EX50X25 BATTENS CAN BE SUBSTITUTED WITH EX50X50 WHERE APPROPRIATE

**NOTE:** SUBSTRATE TO BE FIXED IN STRICT ACCORDANCE WITH MANUFACTURER RECOMMENDATIONS AND LITERATURE