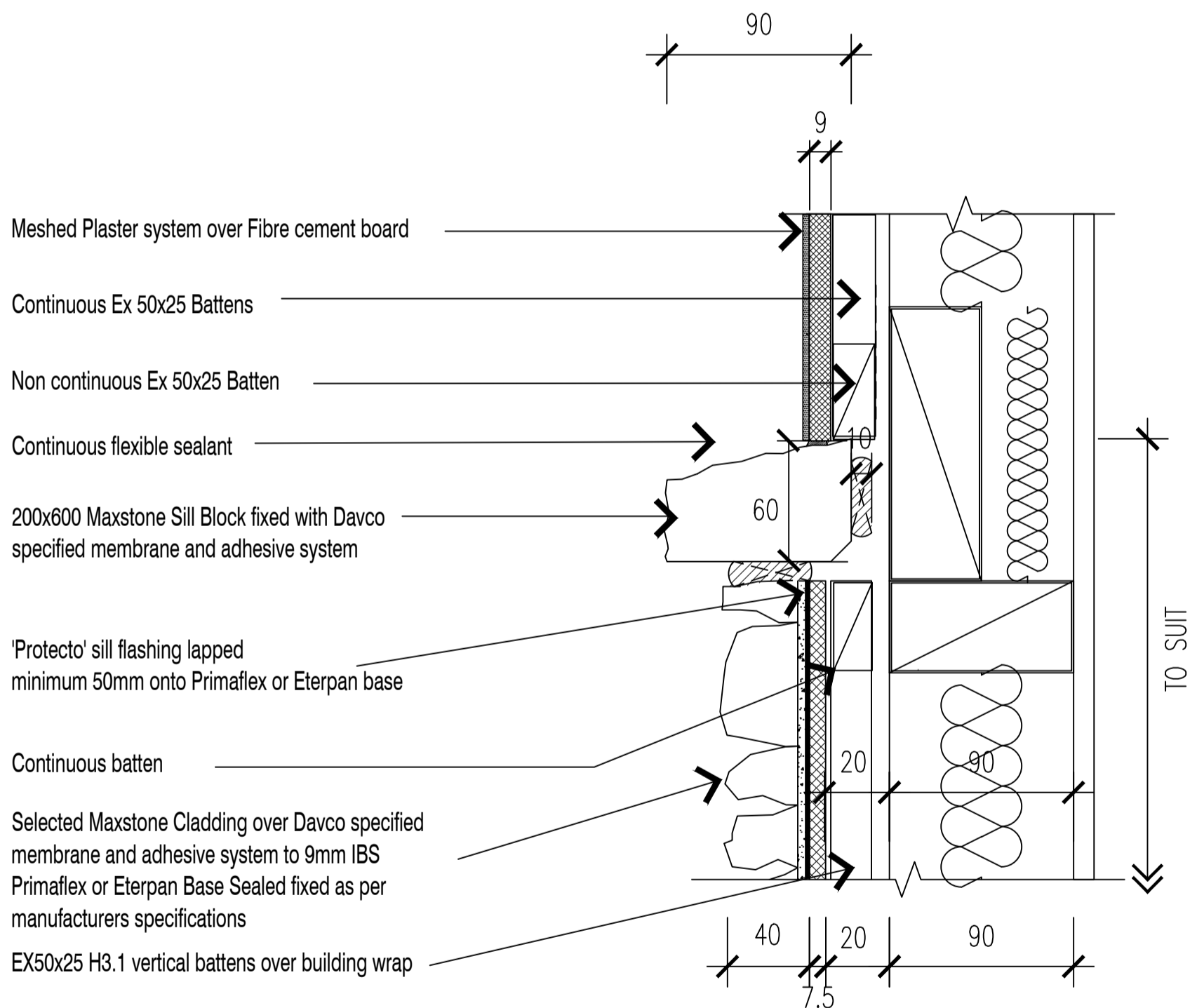




HORIZ. JOINT WITH PLASTER OVER 9MM FIBRE CEMENT

Scale	Date
NTS	26/08/2019
TILEMAX	MAXSTONE



NOTE: EX50x25 BATTENS CAN BE SUBSTITUTED WITH EX50x50 WHERE APPROPRIATE

NOTE: SUBSTRATE TO BE FIXED IN STRICT ACCORDANCE WITH MANUFACTURER RECOMMENDATIONS AND LITERATURE