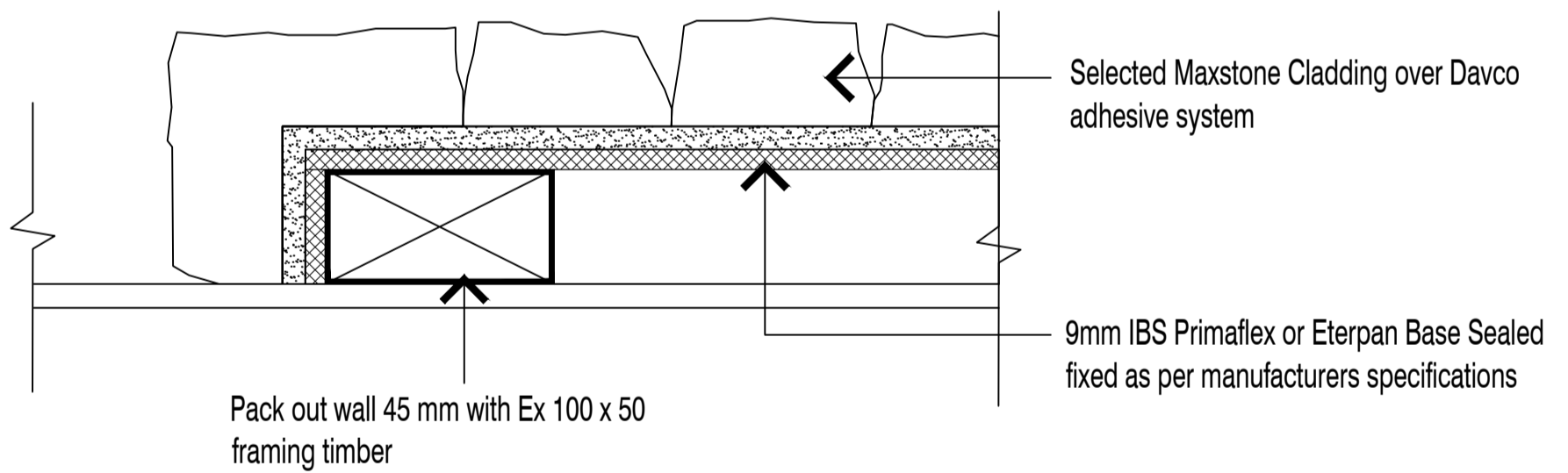




|   |         |            |
|---|---------|------------|
| <h1>FEATURE WALL/FIREPLACE BACKDROP</h1> <h2>45mm PACKER</h2> | Scale   | Date       |
|   | NTS     | 27/08/2019 |
|   | TILEMAX | MAXSTONE   |



**NOTE:** WATER PROOFING MEMBRANE NOT REQUIRED FOR INTERNAL NON-WET AREA APPLICATION

**NOTE:** EX50X25 BATTENS CAN BE SUBSTITUTED WITH EX50X50 WHERE APPROPRIATE

**NOTE:** SUBSTRATE TO BE FIXED IN STRICT ACCORDANCE WITH MANUFACTURER RECOMMENDATIONS AND LITERATURE