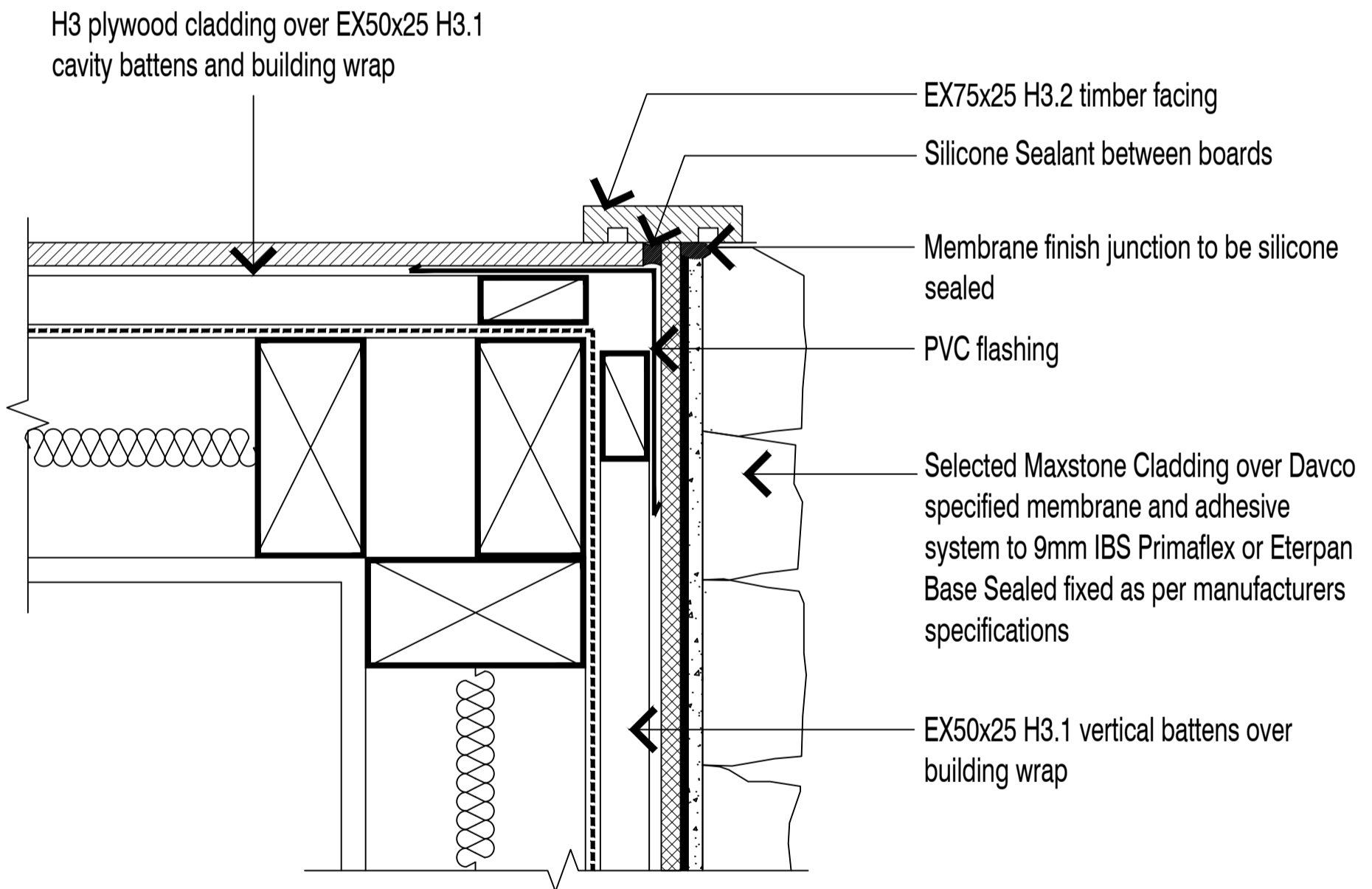




<h1>EXT. CORNER WITH PLY CLADDING I</h1>	Scale	Date
	NTS	26/08/2019
	TILEMAX	MAXSTONE



NOTE: MEMBRANE FINISH JUNCTION TO BE SILICONE SEALED

NOTE: EX50X25 BATTENS CAN BE SUBSTITUTED WITH EX50X50 WHERE APPROPRIATE

NOTE: SUBSTRATE TO BE FIXED IN STRICT ACCORDANCE WITH MANUFACTURER RECOMMENDATIONS AND LITERATURE