

# CUSTOM CHANNEL GRATE MANUFACTURE

LENGTH | FINISH | COLOUR | WASTE OUTLET

lauxes  
GRATES

## PRODUCT CATALOGUE



## WHAT SETS US APART FROM ALL THE OTHERS?

**LIFETIME**  
*Rustproof*  
**WARRANTY**

**WaterMark**  
WM - 022370  
WMTS.040

**UV**

Here at Lauxes Grates we live and breathe our four core values; We Don't Do Boring, We Make Shit Happen, We Stay Hungry and, We Speak POFL (positive outcome focused language).

Together we know we can achieve grateness! Culture is key as we are always thinking of new and innovative ideas, striving to improve processes and introduce new products, whilst constantly evolving and responding to change.

Our team of industry professionals are happy to help you every step of the way. Whether you need help in choosing the most suitable linear floor grate for your project or guidance regarding the installation of a grate... we've got you covered. We are committed to changing the world one grate at a time and we won't stop until we get there!



- ✓ ALL GRATES COME WITH A LIFETIME RUSTPROOF WARRANTY
- ✓ AVAILABLE IN MULTIPLE WIDTHS AND DEPTHS
- ✓ CERTIFIED UNDER THE WATERMARK CERTIFICATION SCHEME
- ✓ EASILY CUSTOMISABLE ON SITE WITHOUT LENGTHY DELAYS
- ✓ AVAILABLE IN MULTIPLE COLOURS
- ✓ UV STABLE - 25 YEAR WARRANTY AGAINST FADING



---

With over twenty years of combined trade experience, our developers have created innovative anodised aluminium grates that are suitable for all indoor and outdoor areas

## What is Anodising?

Anodising is an electrolytic passivation process where the porous on the surface of metals are coated to an oxide layer. This process increases the thickness of the natural oxide layer, making the metals resistant to corrosion and abrasion.

## Why Anodise Aluminium?

Anodising the aluminium makes the metal stronger and more durable, by adding an oxide layer that is almost as strong as diamond. The oxide on aluminium is naturally corrosion resistant, making it a very hard, abrasive resistant and an insulator.

In terms of aesthetic, the anodising process adds a coloured anodic film that will retain and enhance the aluminium inherent beauty. These aesthetics and durability features make anodised aluminium the ideal material for residential, commercial and industrial projects.

## Cleaning

Linear floor grates are easier to maintain than regular grates. Soapy water is our recommended method of cleaning a Lauxes grate. Mild detergents can be used to wipe and remove any matter or debris caught in the drainage area. Use a nylon cleaning pad or brush to run over the surface, rinse with warm water and dry with a clean cloth. Do not use abrasive or harsh chemicals such as acidic products on the grates. Also, do not use excessive force to remove any stubborn marks.

---



# MATERIALS

SLIMLINE TILE INSERT



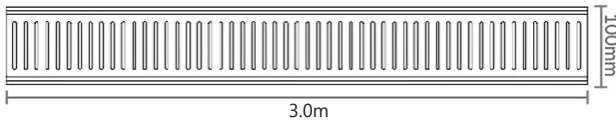
# NEXT GENERATION

## PRODUCT FEATURES

- COMES IN MULTIPLE LENGTHS AND COLOURS
- EASILY CUSTOMISABLE ON SITE
- 3 DIFFERENT DEPTHS
- ANTI TRACKING
- HEEL PROOF
- 25 YEAR WARRANTY AGAINST FADING
- LIFETIME RUSTPROOF WARRANTY
- EASY ROLL-OUT FEATURE FOR CLEANING AND MAINTENANCE

### NeXT Generation 14

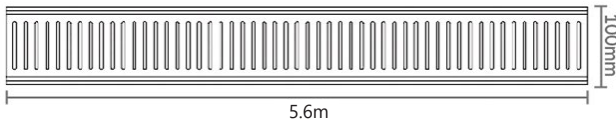
14mm depth  
100mm wide  
3.0m length



LFGNXT14  
Next Gen 14  
Silk Silver

### NeXT Generation 26

26mm depth  
100mm wide  
5.6m length



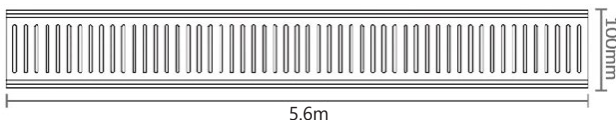
LFGNXT26  
Next Gen 26\*  
Silk Silver



LFGMYGNXT26  
Next Gen 26  
Matte Gold

### NeXT Generation 35

35mm depth  
100mm wide  
5.6m length



LFGNXT35  
Next Gen 35\*  
Silk Silver

\* Indent order only

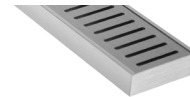
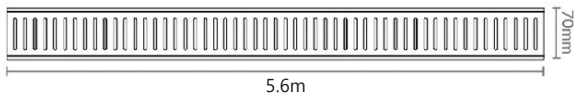
# STANDARD FLOOR GRATES



## PRODUCT FEATURES

- EASILY CUSTOMISABLE ON SITE
- HEEL PROOF
- 25 YEAR WARRANTY AGAINST FADING
- LIFETIME RUSTPROOF WARRANTY
- MODERN AND STYLISH DESIGN
- COMES IN 2 COLOURS AND WIDTHS

**Standard Floor Grate**  
23mm depth  
70mm wide  
5.6m length

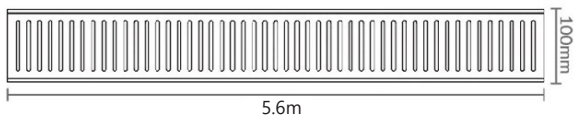


LFGSFG  
**STANDARD  
FLOOR GRATE**  
Silk Silver



LFGMGFG  
**STANDARD  
FLOOR GRATE**  
Midnight

**Wide Standard Floor Grate**  
26mm depth  
100mm wide  
5.6m length



LFGWSFG  
**WIDE STANDARD  
FLOOR GRATE**  
Silk Silver



LFGMWSFG  
**WIDE STANDARD  
FLOOR GRATE\***  
Midnight

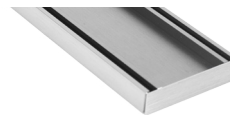
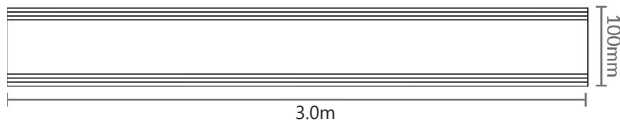
# SLIMLINE TILE INSERT



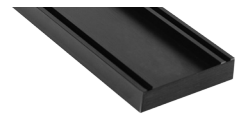
## PRODUCT FEATURES

- COMES IN MULTIPLE LENGTHS AND SIZES
- ACCOMMODATES DIFFERENT TILE SIZES
- EASILY CUSTOMISABLE ON SITE
- ANTI TRACKING
- 25 YEAR WARRANTY AGAINST FADING
- LIFETIME RUSTPROOF WARRANTY
- MODERN AND STYLISH DESIGN
- EASY ROLL-OUT FEATURE FOR CLEANING AND MAINTENANCE

**Slimline Tile Insert 21**  
21mm depth  
100mm wide  
3.0m length

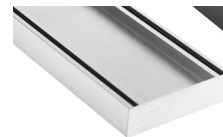
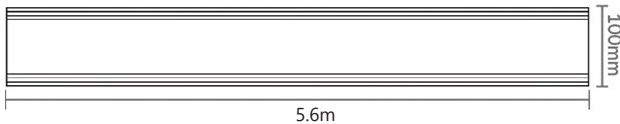


LCTSTI21  
**SLIMLINE TILE INSERT 21MM**  
Silk Silver

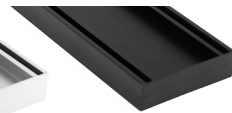


LCMSTI21  
**SLIMLINE TILE INSERT 21MM**  
Midnight

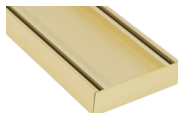
**Slimline Tile Insert**  
26mm depth  
100mm wide  
5.6m length



LFGSTI  
**SLIMLINE TILE INSERT 26MM**  
Silk Silver

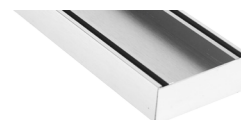
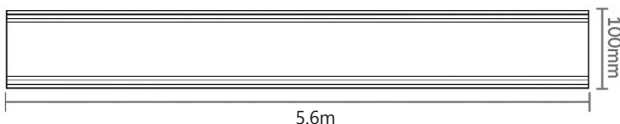


LFGMSTI  
**SLIMLINE TILE INSERT 26MM**  
Midnight



LFGMYGSTI  
**SLIMLINE TILE INSERT 26MM**  
Matte Gold

**Tile Insert Plus**  
35mm depth  
100mm wide  
5.6m length



LFGTIP  
**TILE INSERT PLUS\***  
Silk Silver

\* Indent order only



### CUSTOM CHANNEL GRATE FORM

Contact Name: \_\_\_\_\_ Contact Phone Number: \_\_\_\_\_

Channel Model: \_\_\_\_\_ Width: \_\_\_\_\_

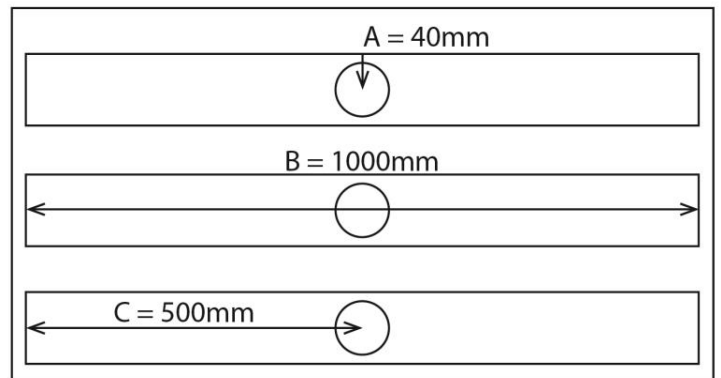
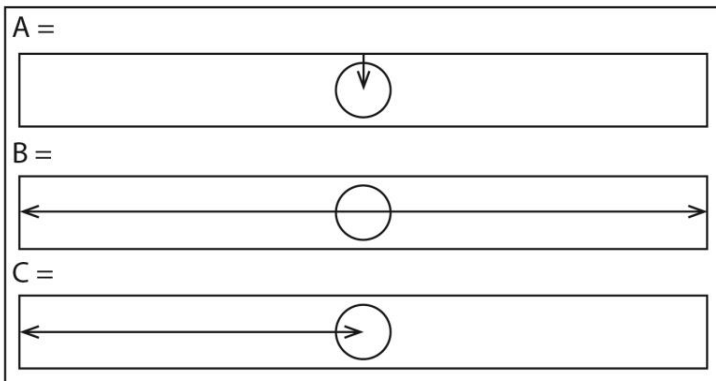
Colour: \_\_\_\_\_ Waste Outlet Size: 50mm

Please draw an image below with the dimensions needed. There are three dimensions we require to complete your job:

**A:** Measurement from back edge of channel to centre of drain hole. Max offset = 10mm.

**B:** Length of channel end to end.

**C:** Offset drain placement – left hand edge to centre of drain hole.

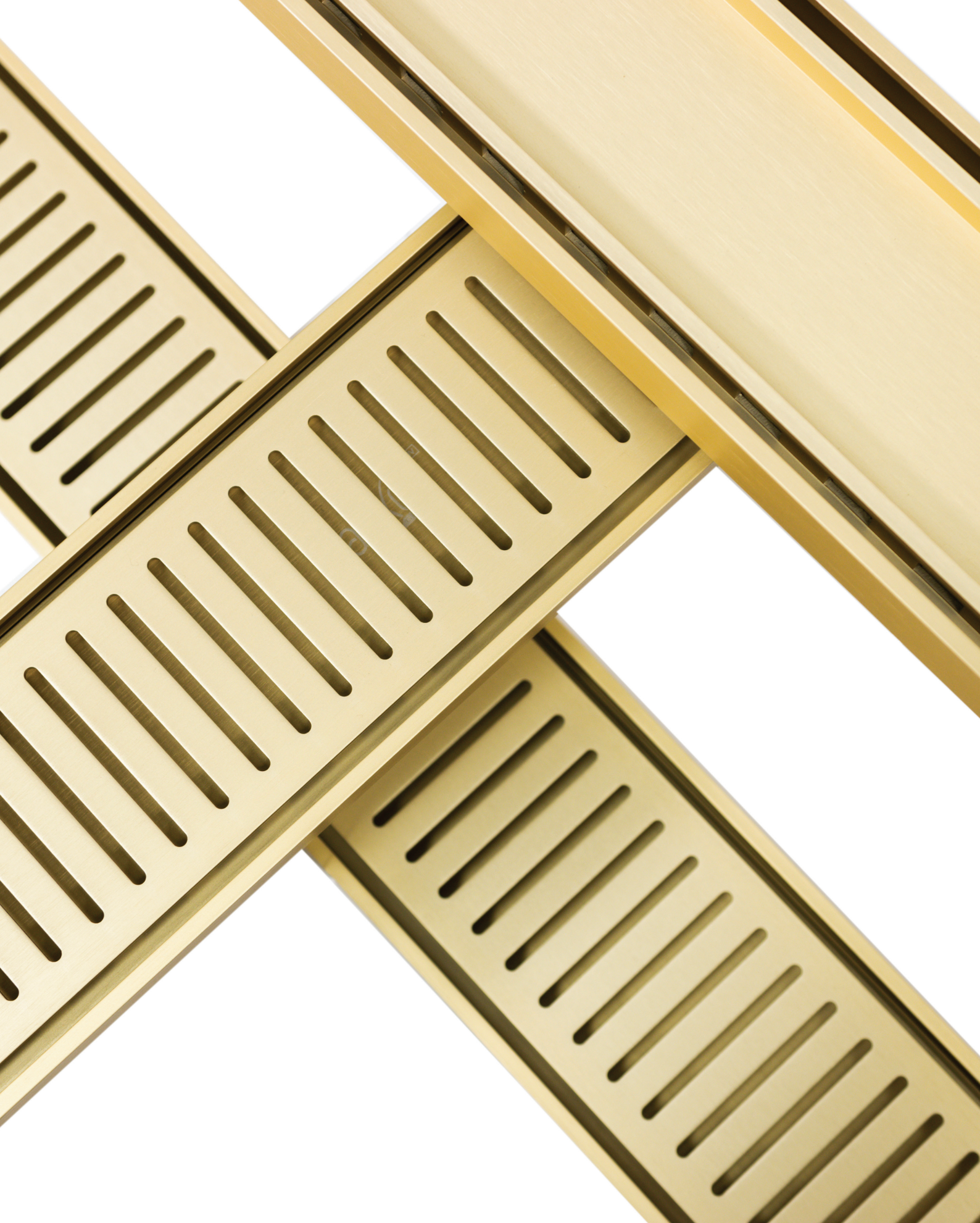


**Draw your channel here:**

Note: All measurements must be in millimeters. All measurements are taken from top view of channel.







Contact us for more information on Lauxes Products  
0508 TILEMAX | [www.tilemax.co.nz](http://www.tilemax.co.nz)

