

Max Floor Aqua-Shell Installation Instructions

The Max Floor Aqua-Shell kit is used to create a watertight seal between the Max Floor SPC Flooring and common connection points like skirting boards, along walls, stairs, plumbing penetrations, etc.

This high-quality kit consists of two parts:



Sika Sikasil General Purpose Silicone | a one-component neutral curing silicone sealant suitable for indoor and outdoor applications. It is transparent and is used as a joint sealant between a variety of substrates incl. SPC flooring installation. For the TDS

6mm Sika PEF Rod | this product is manufactured from the highest quality closed cell polyethylene to produce a joint backing material primarily for use in conjunction with elastomeric sealants. For the TDS

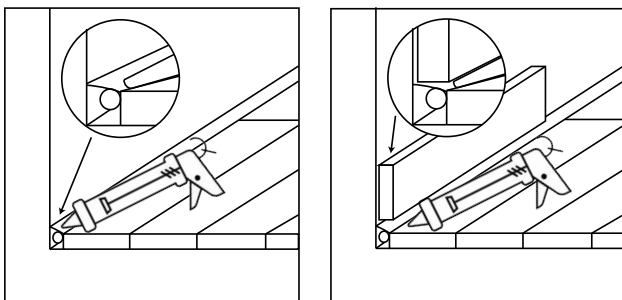
In places where the wall board is over 6mm above the floor, the **Gripset Elastoproof BRW Butyl Tape 10mx80mm** is 100% waterproof and needs to be used in the junction. For the TDS

Applications

Please see the diagrams below outlining applications for the Aqua-Shell and installation instructions. More detailed installation diagrams can be found on page 2 and 3.

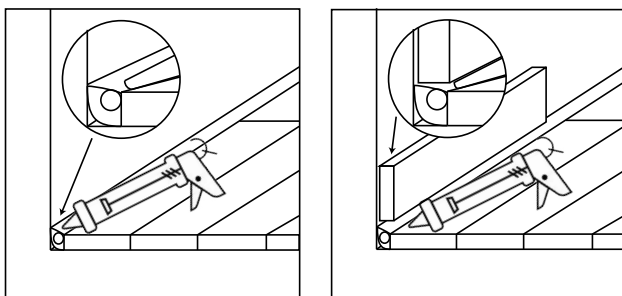
Wall/Floor Junction with Skirting Board Installation

1. Install Max Floor with a 6-10mm expansion gap from the wall.
2. Insert 6mm Sika PEF rod between the Max Floor and wall board. Fill the remaining gap with Sikasil silicone.
3. Install timber skirting board over the Max Floor, and seal with a bead of Sikasil silicone.



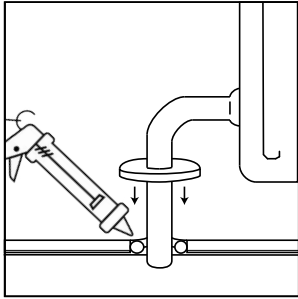
Wall/Floor Junction where wall board is more than 6mm above the floor

1. Start by inserting Gripset Elastoproof BRW Butyl Tape 10mx80mm over the wall/floor junction
2. Install Max Floor with a 6-10mm expansion gap from the wall.
3. Insert 6mm Sika PEF rod over the Butyl Tape. Fill the remaining gap with Sikasil silicone.
4. Install timber skirting board over the Max Floor, and seal with a bead of Sikasil silicone.



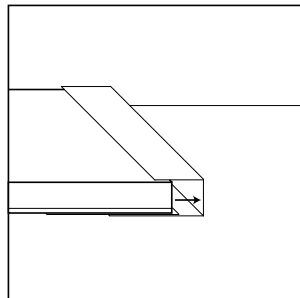
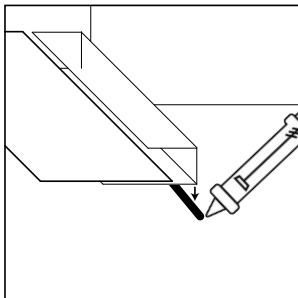
Pipe Penetration Junction Installation

1. Allow for a 6-10mm gap between Max Floor and the pipe.
2. Insert 6mm Sika PEF rod around the pipe junction and fill the remaining gap with Sikasil silicone.
3. If applicable, install pipe cover over the Max Floor, and seal with a bead of Sikasil silicone along all of the connection points..



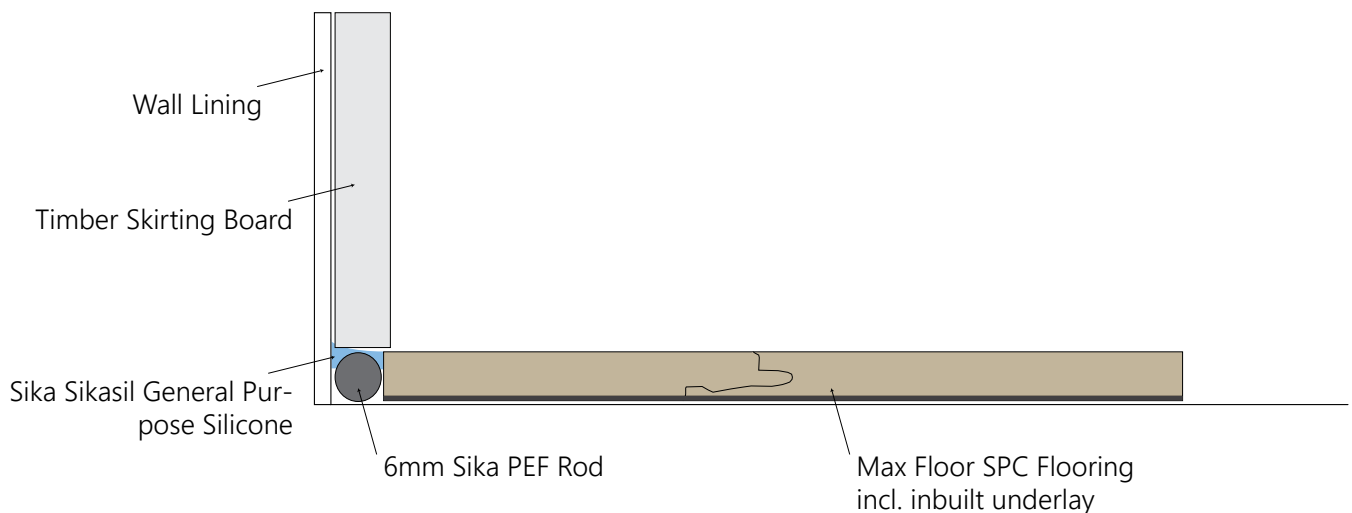
Doorway Junction Installation

4. Cut a piece of U-Channel trim to fit across the door threshold and then silicone in place.
5. Then silicone in a strip of Gripset Elastoproof BRW Butyl Tape 10mx80mm to cover the trim/floor junction.
6. Slide the Max Floor into the U-Channel trim, and silicone along the doorway and skirting junctions.

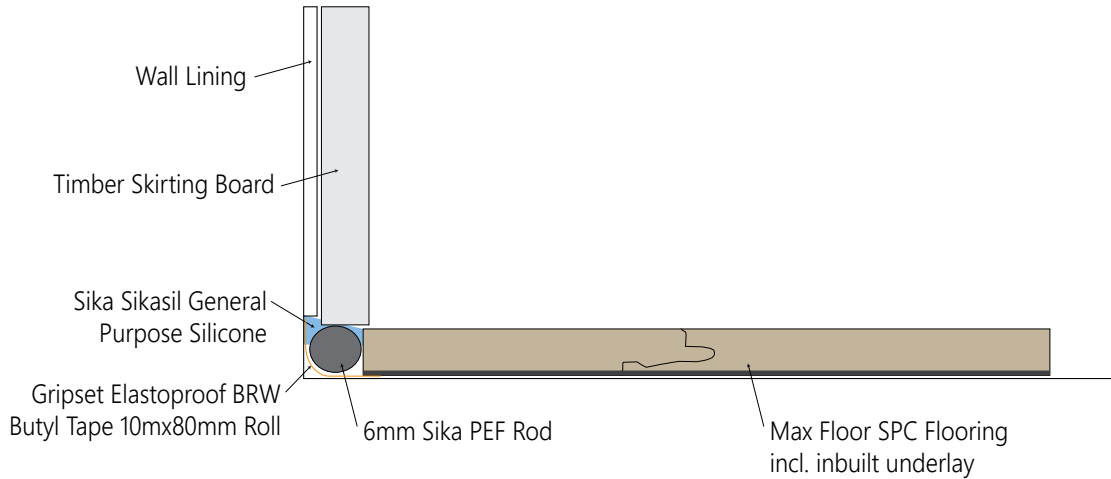


Detailed Installation Diagrams

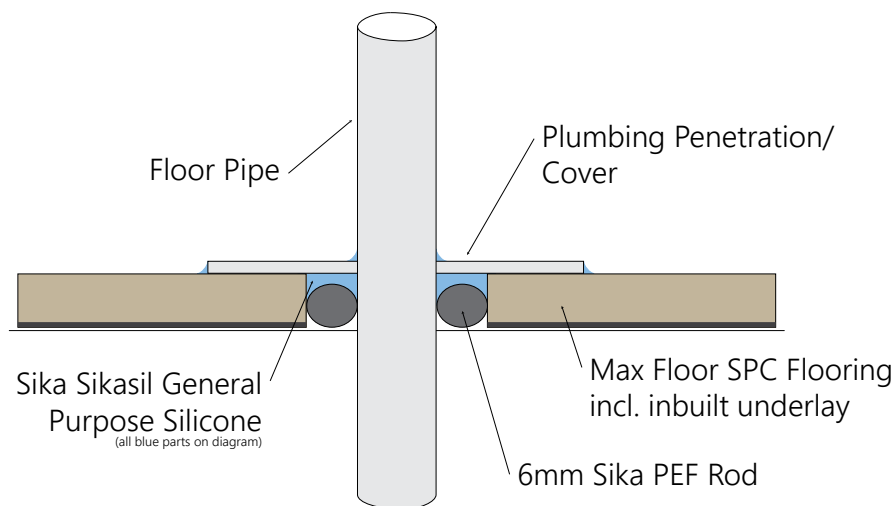
Wall/Floor Junction with Skirting Board Installation



Wall/Floor Junction where wall board is more than 6mm above the floor



Pipe Penetration Junction Installation



Doorway Junction Installation

