



BUILDING TRUST



Davco K10 Plus Waterproofing Detail

Fig. 1 | Wall/Floor Junction Detail

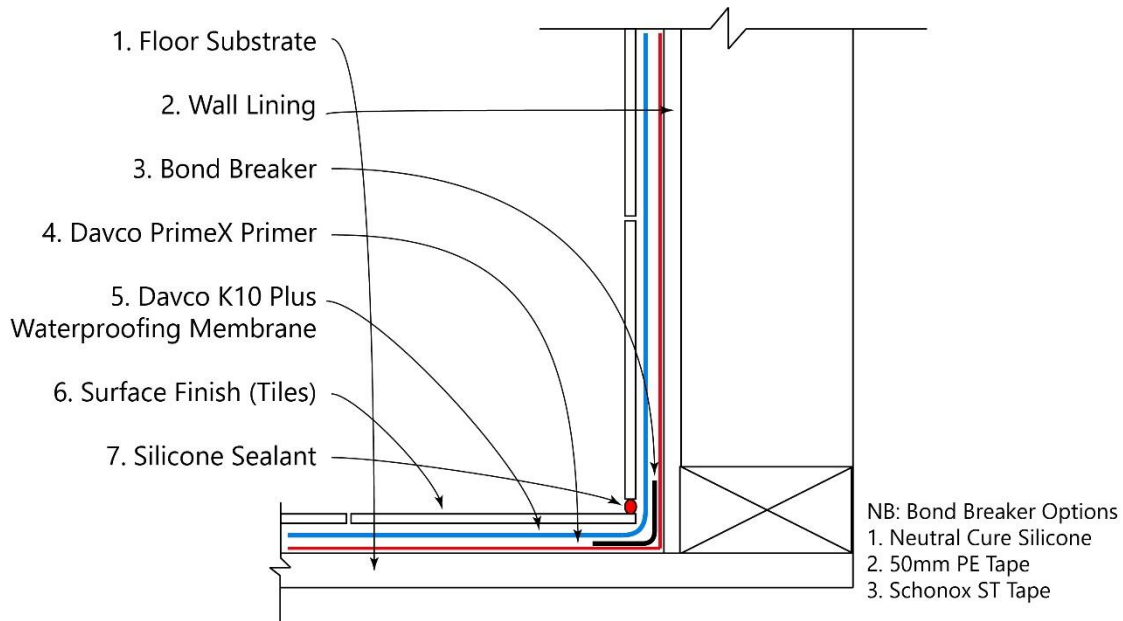
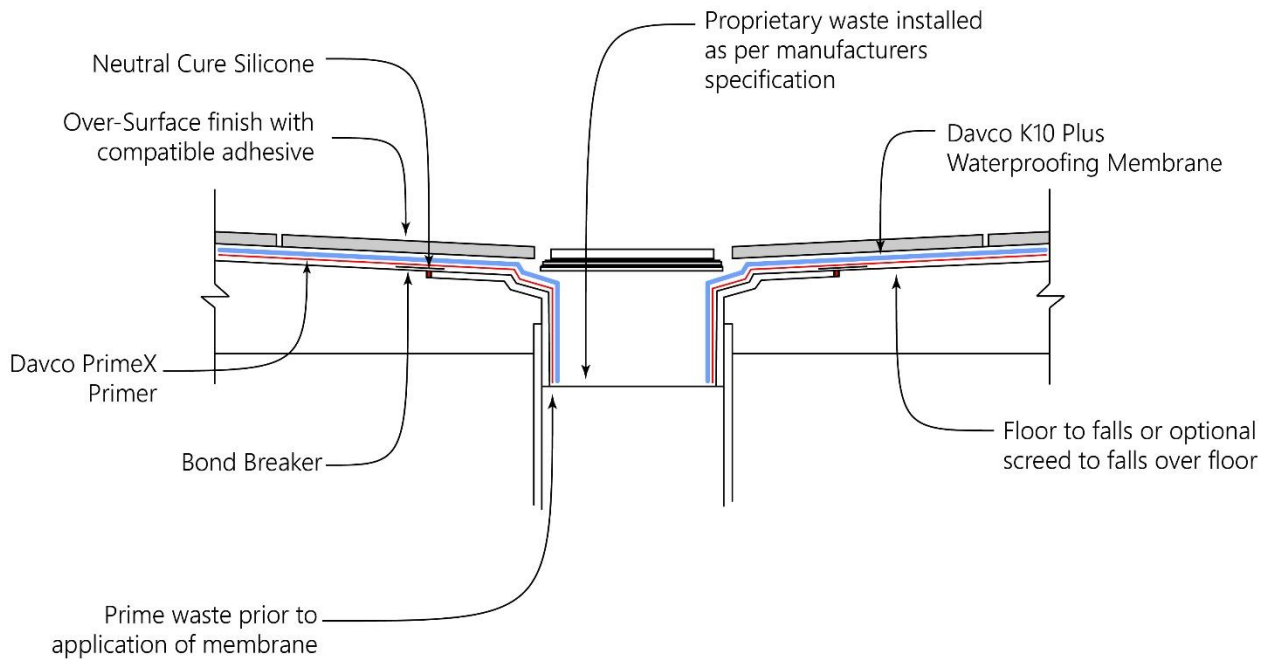


Fig. 2 | Outlet Detail





BUILDING TRUST



Fig. 3 | Hob Detail

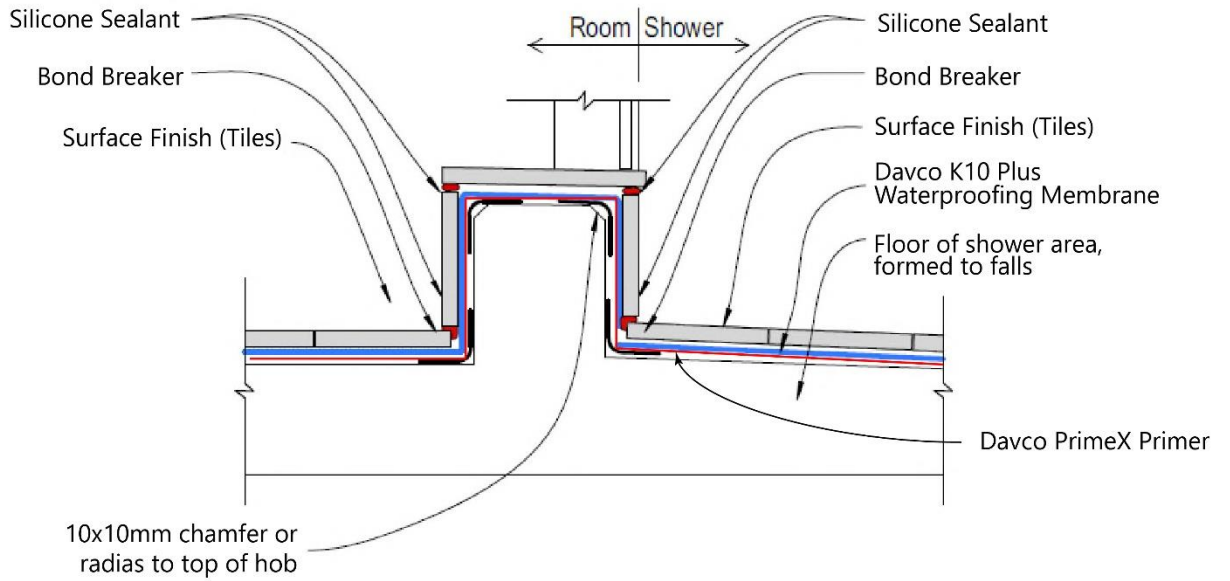
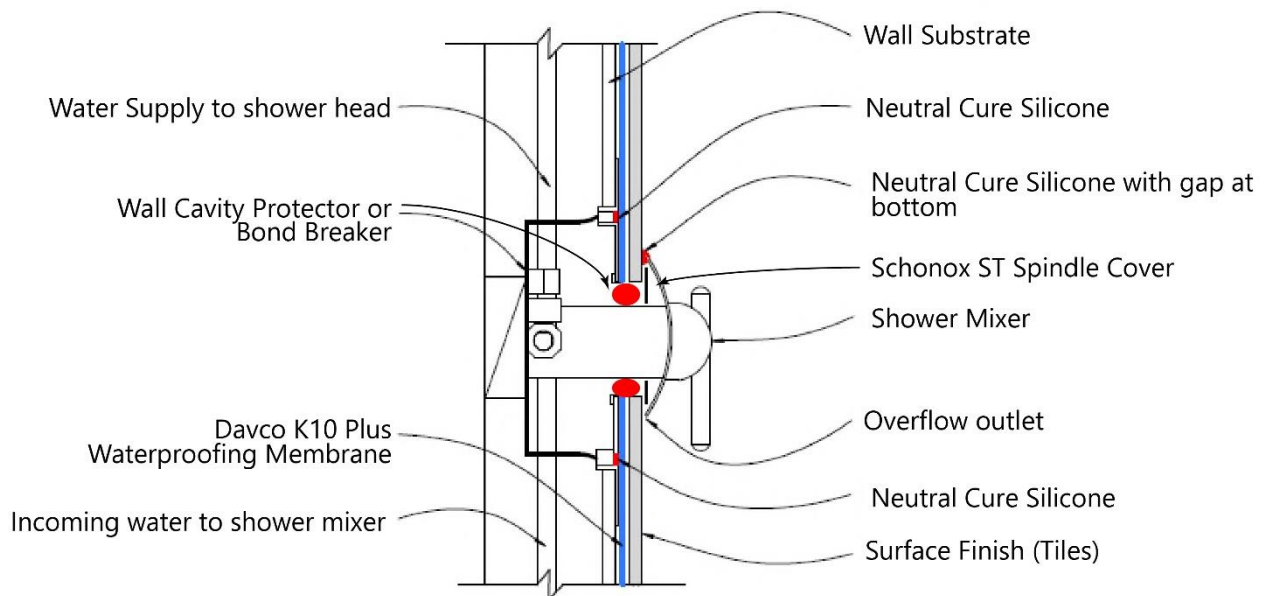


Fig. 4 | Mixer Detail

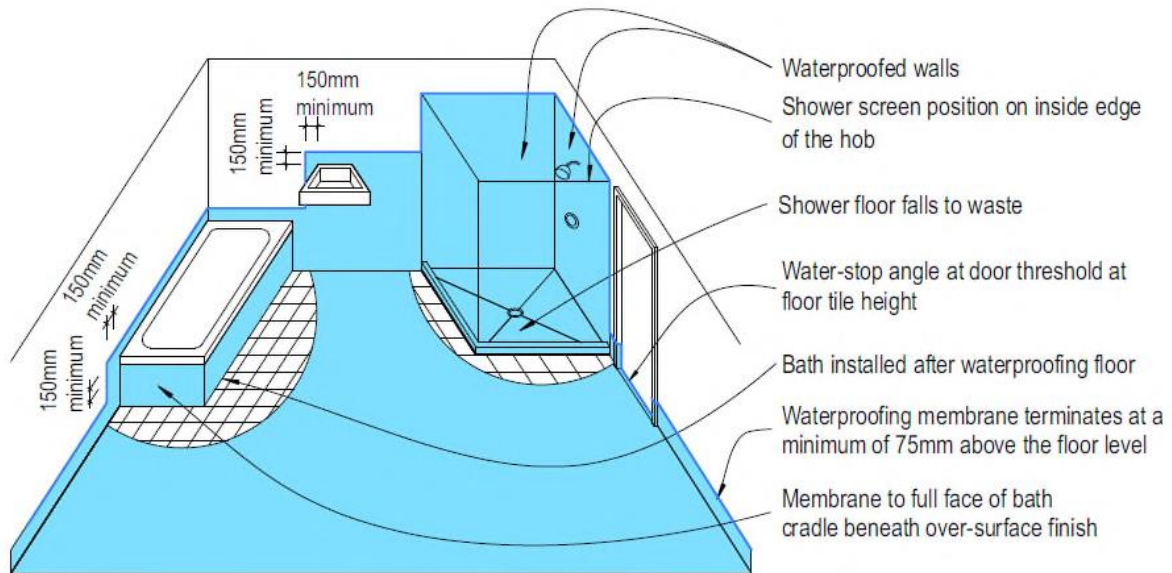




BUILDING TRUST



Fig. 5 | Full bathroom Detail



NB: For Niches/recessed shelving and footrests, please use the same wall/floor corner junction as detailed above.



BUILDING TRUST



Noel Rajanayagam

Business Development Manager

Sika Australia Pty. Ltd.

122 Newton Road · Wetherill Park · New South Wales · 2164 · Australia

Phone: +61 2 9725 1145 · Mobile: +61 412 735 090 · Fax: +61 2 9725 2605

rajanayagam.noel@au.sika.com · www.sika.com.au