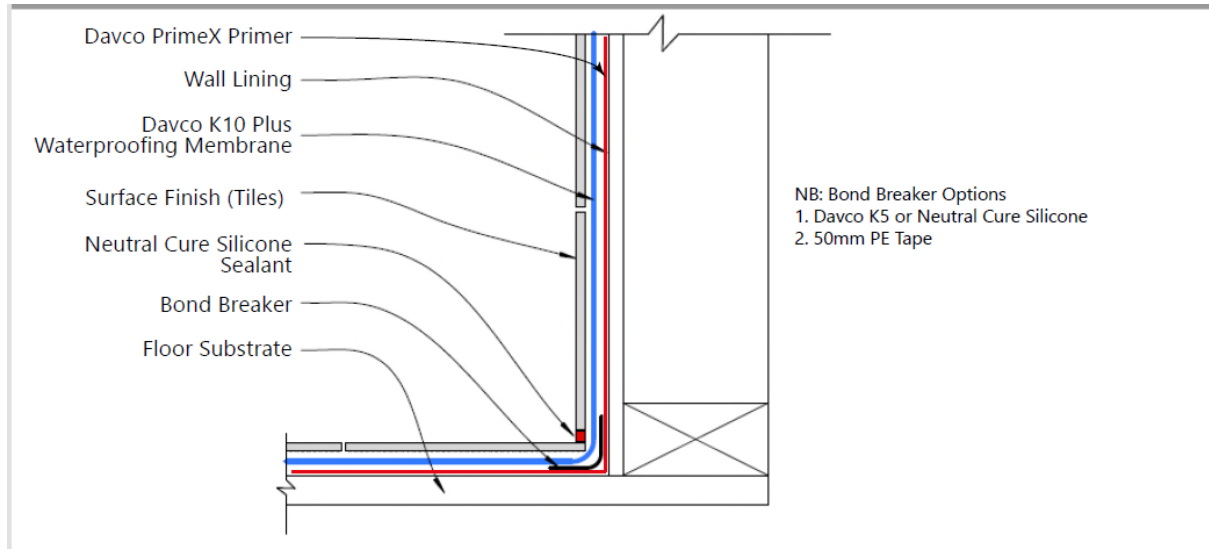




BUILDING TRUST



Davco K10 Plus installation overview.



Installation steps

- Visit site and assess substrate suitability
- Ensure falls are correct
- Clean and prep the substrate as per standard tiling practice and K10 Plus TDS advice
- Prime area to be waterproofed, walls, floors and waste outlet with substrate appropriate primer and allow to dry.
- Install Bond breaker and detail water stops. allow to cure if Neutral cure silicone is used (minimum radius 12mm)
- Install first coat of Davco K10 Plus as per product TDS and allow to dry
- Install second coat of Davco k10 Plus as per product TDS at 90 degrees to first coat
- Allow membrane to fully cure prior to commencing tile application
- Should pond testing be required allow 5 days product cure time prior.

Product required

- Cleaning, prep and membrane application tools
- Primer - Davco Primex or Ultraprime
- Bond breaker – Neutral cure silicone or 50mm polyethylene bond breaker tape or Schonox ST Tape
- Davco K10 plus, K10 Rapid or K12 waterproofing membrane
- Install tile using Davco specified adhesive systems